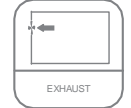


HPAXIDIK Roof Mounted Vertical Discharge Axial Fan



HPAXIDIK fans push the air vertically unlike traditional roof fans which push horizontally. The air can be pushed up to 10 meters which allows fans to be placed in close quarters with other things and doesn't disturb people who may be on the same level of fan.



MOTOR INSULATION CLASS	F CLASS
MOTOR PROTECTION CLASS	IP 55
MOTOR EFFICIENCY CLASS	IE2-IE3
MOTOR ENCLOSURE TYPE	TEFC
MOTOR BRAND	GAMAK-VOLT-WATT
BODY MATERIAL	GALVANIZED SHEET METAL
BODY COATING	ELECTROSTATIC POWDER PAINT
IMPELLER MATERIAL	ALUMINIUM
DUTY CYCLE	IEC Duty Cycle-S1
WORKING AMBIENT TEMPERATURE	-20 - +50 °C
DIRECTIVE	IEC-60335-2-80, ISO 1940-1

MODEL	VOLTAGE (V)	FREQUENCY (Hz)	POWER (kW)	REVOLUTION (rpm)	FLOW RATE (m³/h)	NOISE LEVEL (dB(A))	PRICE
HPAXIDIK 400-5-25	380	50	0,37	1.450	2.850	66	
HPAXIDIK 450-5-25	380	50	0,55	1.456	3.800	69	
HPAXIDIK 500-5-25	380	50	0,55	1.453	4.750	72	
HPAXIDIK 560-5-25	380	50	0,75	1.466	7.125	75	
HPAXIDIK 630-5-30	380	50	1,10	1.465	11.400	80	
HPAXIDIK 710-5-30	380	50	1,50	1.472	16.150	83	
HPAXIDIK 800-5-30	380	50	2,20	1.459	21.850	85	
HPAXIDIK 800-5-35	380	50	3,00	1.463	26.600	89	

Values are for 0 Pa.

OPTIONS



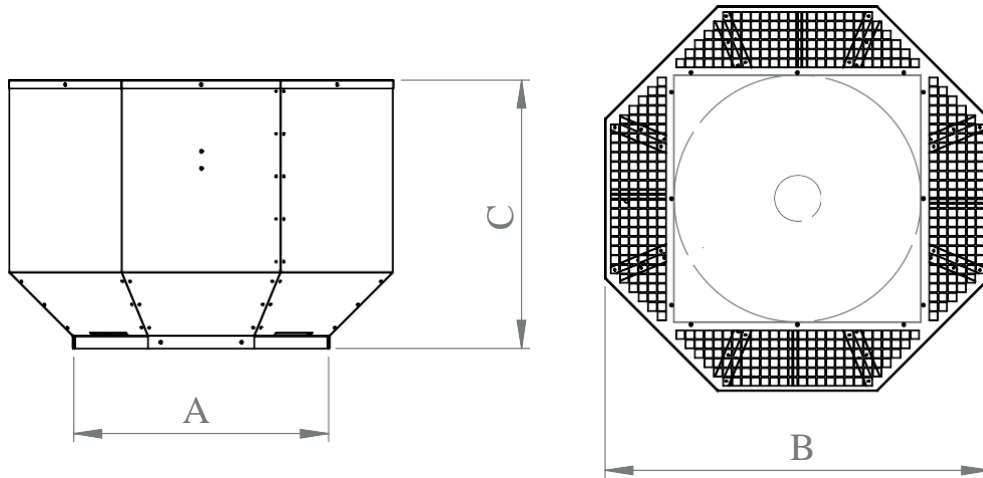
BACK DRAFT DAMPER

SIZE	PRICE
400	
450	
500	
560	
630	
710	
800	

OPTIONS

- **Electro-Static Powder Coating**
- Custom Fans For Specific Flow Rate and Pressure
- **5, 8, 12, or 16 Blade Fan**
- **Aluminium or Plastic Blades**
- **System Automation**
- **Two-Speed Motor**
- **Motorized Damper**
- **Smoke Exhaust Model**

DRAWING



MODEL	A (mm)	B (mm)	C (mm)
HPAXIDIK 400	500	800	600
HPAXIDIK 450	550	850	600
HPAXIDIK 500	600	900	630
HPAXIDIK 560	660	960	630
HPAXIDIK 630	730	1030	700
HPAXIDIK 710	810	1110	700
HPAXIDIK 800	900	1200	750