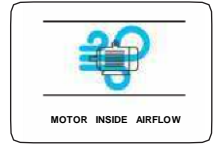
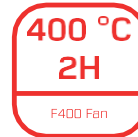


## HJET-R Jet Fan


**Description :**

Centrifugal Jet Fans can be used for limited space when there is height issue in parking lots.

MOTOR INSULATION CLASS	H CLASS
MOTOR PROTECTION CLASS	IP 54-IP 55
MOTOR EFFICIENCY CLASS	IE1-IE2
MOTOR ENCLOSURE TYPE	TEAO
MOTOR BRAND	WEG-GAMAK
BODY MATERIAL	GALVANIZED SHEET METAL
BODY COATING	NONE
IMPELLER TYPE	BACKWARD CURVED
IMPELLER MATERIAL	GALVANIZED SHEET METAL
DUTY CYCLE	IEC Duty Cycle-S1
WORKING TEMPERATURE	-20 - +50 °C
STANDARDS	IEC-60335-2-80, ISO 1940-1



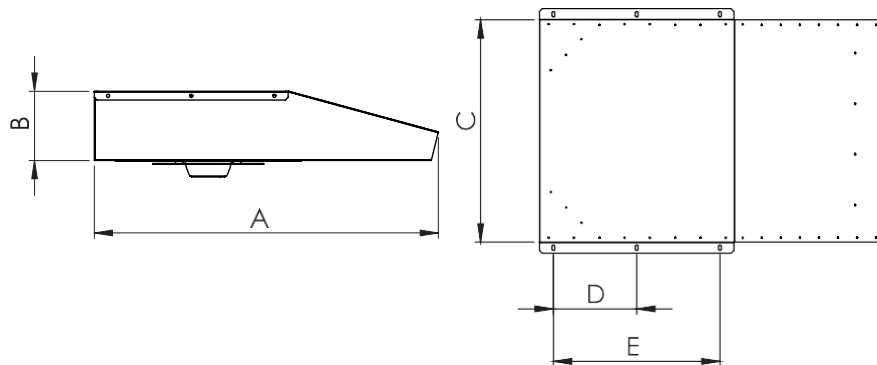
### TECHNICAL SPECIFICATIONS

MODEL	FLOW RATE (m <sup>3</sup> /h)	AIR SPEED (m/s)	THRUST FORCE (N)	POWER (KW)	REV. (RPM)	SOUND PRESSURE dB(A) 3m
HJET-R 50	2.850 - 5.760	10,0 - 20,0	13-50	0,30 -1,20	750 - 1.500	38 - 54
HJET-R 70	3.500 - 7.009	12,2 - 24,4	19-70	0,55 - 2,20	750 -1.500	43 - 58
HJET-R 90	3.800 - 7641	13,3 - 26,6	25-90	0,55 - 2,20	750 -1.500	46 - 62

### OPTIONS

- SYSTEM AUTOMATION
- CFD ANALYSIS

### TECHNICAL DRAWING



MODEL	A (mm)	B (mm)	C (mm)	D (mm)	E(mm)
HJET-R 50	1215	250	800	300	600
HJET-R 70	1300	300	840	300	600
HJET-R 90	1300	300	840	300	600