

HCA- Belt Drive Cabinet Fan

Description :

HCA Ventilation Unit can be used in the range of 500 m³/h to 100.000 m³/h air flow capacity, G4, G2, F7 etc. applicable as filter and production is made in different types and sizes if desired.

- * Housing structure is aluminum carcass and the corners are produced as plastic and aluminum components.* Panel thicknesses are produced as standard 25mm or optional 50mm rock wool insulated double skin, Electrostatic Powder Painted and Leak-proof Gasket.
- * Double Inlet Radial Fans with Belt Driven Assemblies are Used inside.
- * Easy installation is possible with the compact design.
- * It is used for supply, exhaust or pressurization for the ventilation.

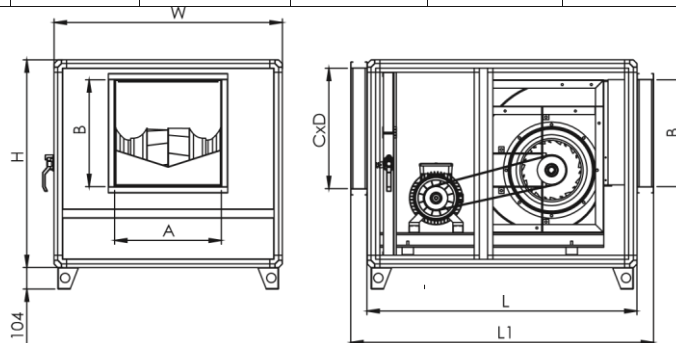
Factory, Hospital, Office, Laboratory, Shopping Center (shopping malls), Cafe, Restaurants, Parking lots etc. It is suitable for use in all structures which has air duct system



| | | | |
|-------------------------------|------------------------|-----------------------------|----------------------------|
| MOTOR PROTECTION CLASS | IP 55 | BODY COATING | OPTIONAL POWDER COATING |
| MOTOR INSULATION CLASS | F CLASS | IMPELLER TYPE | BACKWARD CURVED |
| MOTOR EFFICIENCY CLASS | IE2-IE3 | IMPELLER MATERIAL | GALVANIZED SHEET METAL |
| MOTOR ENCLOSURE TYPE | TEFC | DUTY CYCLE | IEC Duty Cycle-S1 |
| MOTOR BRAND | GAMAK - VOLT -WAT | WORKING AMBIENT TEMP | -20 - +50 °C |
| BODY MATERIAL | GALVANIZED SHEET METAL | DIRECTIVE | IEC-60335-2-80, ISO 1940-1 |

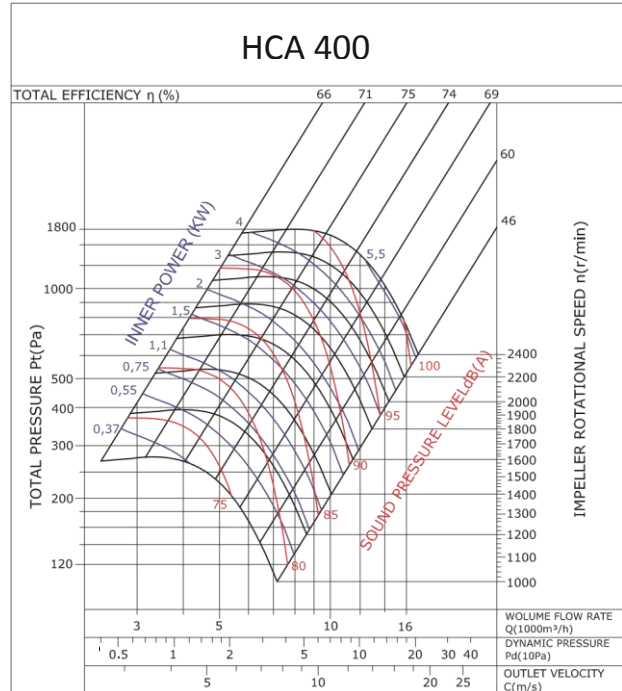
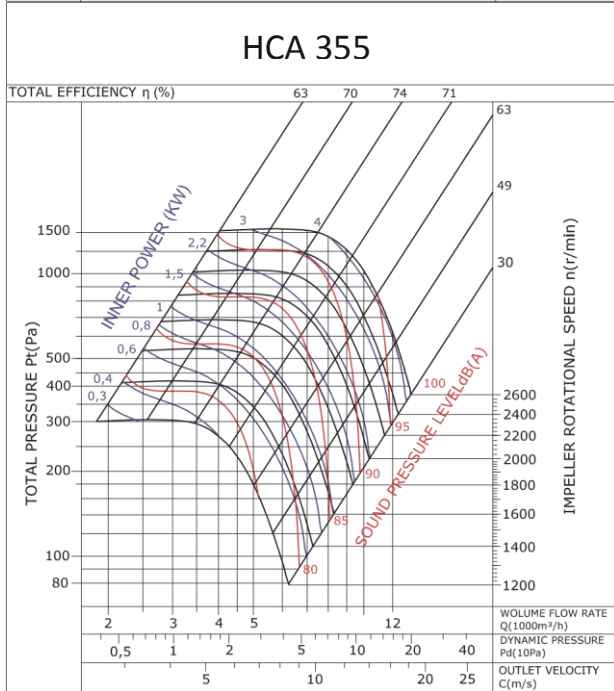
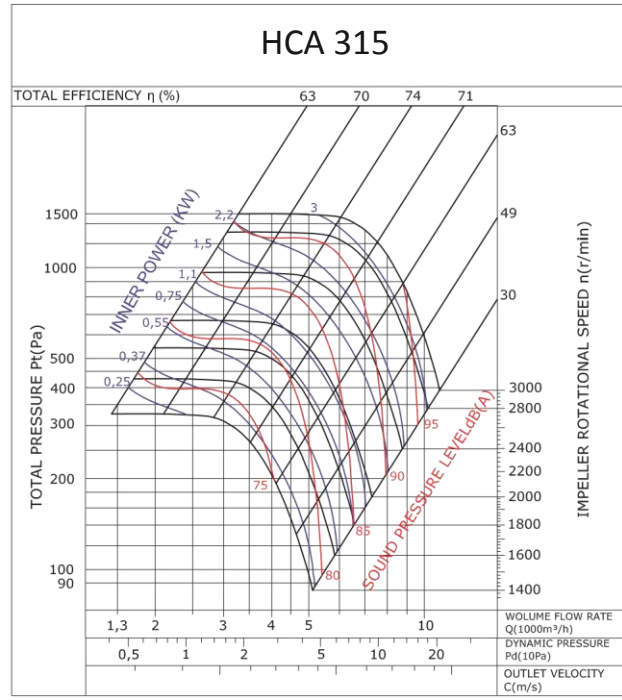
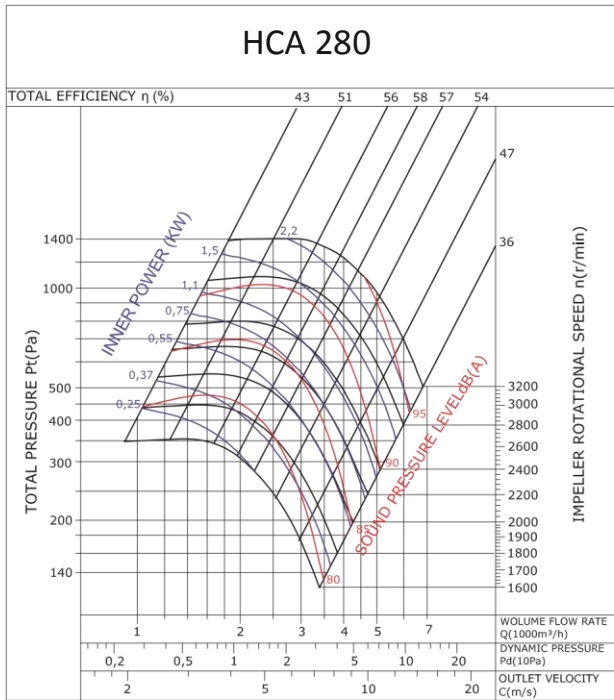
TECHNICAL SPECIFICATIONS AND DRAWING

| MODEL | VOLTAGE (V) | FREQUENCY (Hz) | POWER (KW) | REV. (RPM) | FLOW RATE (m3/h) | SOUND PRESSURE dB(A) 3m | WEIGHT (KG) |
|-----------|-------------|----------------|------------|------------|------------------|-------------------------|-------------|
| HCA 250 | 230 or 380 | 50 | 1,1 | 2.800 | 3.000 | 70 | 44 |
| HCA 280 | 230 or 380 | 50 | 1,5 | 2.800 | 5.500 | 70 | 45 |
| HCA 315 A | 230 or 380 | 50 | 2,2 | 2.800 | 7.000 | 70 | 63 |
| HCA 315 B | 230 or 380 | 50 | 3 | 2.800 | 8.000 | 70 | 64 |
| HCA 355 A | 230 or 380 | 50 | 3 | 2.800 | 9.500 | 73 | 84 |
| HCA 355 B | 380 | 50 | 4 | 2.800 | 10.000 | 73 | 87 |
| HCA 400 A | 380 | 50 | 4 | 1.400 | 13.000 | 73 | 105 |
| HCA 400 B | 380 | 50 | 5,5 | 1.400 | 15.000 | 78 | 109 |
| HCA 450 A | 380 | 50 | 5,5 | 1.400 | 16.000 | 71 | 134 |
| HCA 450 B | 380 | 50 | 7,5 | 1.400 | 18.500 | 75 | 139 |
| HCA 500 | 380 | 50 | 7,5 | 1.400 | 20.000 | 76 | 168 |
| HCA 560 A | 380 | 50 | 7,5 | 1.400 | 25.000 | 80 | 282 |
| HCA 560 B | 380 | 50 | 11 | 1.400 | 30.000 | 85 | 290 |
| HCA 630 | 380 | 50 | 11 | 1.400 | 32.500 | 93 | 325 |



| MODEL | L1 (mm) | L (mm) | W (mm) | H (mm) | A (mm) | B (mm) | C (mm) | D (mm) |
|---------|---------|--------|--------|--------|--------|--------|--------|--------|
| HCA 250 | 900 | 700 | 700 | 700 | 322 | 322 | 230 | 620 |
| HCA 280 | 1000 | 800 | 800 | 800 | 360 | 360 | 280 | 720 |
| HCA 315 | 1100 | 900 | 900 | 900 | 404 | 404 | 330 | 820 |
| HCA 355 | 1200 | 1000 | 1000 | 1000 | 453 | 453 | 380 | 920 |
| HCA 400 | 1300 | 1100 | 1100 | 1100 | 507 | 507 | 430 | 1020 |
| HCA 450 | 1400 | 1200 | 1200 | 1200 | 570 | 570 | 480 | 1120 |
| HCA 500 | 1500 | 1300 | 1300 | 1300 | 638 | 638 | 530 | 1220 |
| HCA 560 | 1600 | 1400 | 1400 | 1400 | 715 | 715 | 580 | 1320 |
| HCA 630 | 1700 | 1500 | 1500 | 1500 | 800 | 800 | 630 | 1420 |

HCA PERFORMANCE CURVES



HCA PERFORMANCE CURVES

