

Catalog

2025

havAlan



PROKTES
PROJE KONSTRÜKSİYON TESİSAT
DOĞALGAZ İNŞ. SAN. TİC. LTD. ŞTİ.



About us

Established in June 2008 by Mehmet Ilkay Ilgen, our company brings over 17 years of extensive experience and knowledge to the industry. Based in Denizli, Turkey, we specialize in providing comprehensive services to our clients, from conceptualization to execution.

Services

We offer a wide range of services, leveraging our expertise in Turkey:

- Ventilation and Insulation Systems
- Central System Heating, Cooling, and Ventilation
- Air Handling Units
- Paint and Dust Extraction Systems
- Steel Construction Structures
- Industrial Furnaces

Mission

Our mission revolves around prioritizing customer satisfaction through the implementation of effective, economical, and accurate project policies. We take pride in our team of young, active, dynamic, and hardworking professionals who ensure the success of every project.

Products

Explore our diverse range of products designed to meet various needs:

- Cabinet Cell Type Fans
- Kitchen Hood Fans
- Axial Fans
- Pressurization Fans & Smoke Exhaust Fans
- Radial Fans
- Centrifugal Snail Fans
- Inline Duct Type Fans
- Domestic and Commercial Fans
- Air Cooling Units
- Heat Recovery Units
- Devices – Chillers and Appliances
- Flexible Ducts and Galvanized Ducts
- Filters
- Impellers
- Fan and Duct Accessories.



Saraylar Mahallesi 1.sanayi sitesi, No: 23 Merkez/ Denizli, Turkey



+90 258 265 60 83



+90 258 274 60 64



+90 552 778 37 78



www.proktes.com
sales@havalan.com.tr
info@proktes.com



www.proktes.com



[havalan.proktes.2008](https://www.instagram.com/havalan.proktes.2008)



[Havalan.Proktes](https://www.facebook.com/Havalan.Proktes)



[Proktes.havalan](https://www.youtube.com/Proktes.havalan)

2025



Fans

1 Inline Duct Type Fans

HRAD- CIRCULAR DUCT FANS TILTED BACK
DUCT TYPE FANS WITH EXTERNAL MOTOR
DUCT TYPE FANS WITH INTERNAL MOTOR

2 Snail Centrifugal Fans

ALUMINUM BODY SNAIL FAN
LOW PRESSURE SAIL FANS

3 Cabinet Type Fans

DIRECT COUPLED RADIAL FAN-KITCHEN HOOD FAN
CABINET TYPE FANS
KITCHEN HOOD FANS
COVERED BLADE CELL FAN

In-Line Duct Fan

In-line Duct Fans are essential components used within ventilation systems to facilitate airflow between ducts. Designed with precision, these fans feature inlet and outlet structures aligned with the geometrical surface for easy mounting.

Features:

Optimized Design: Engineered for seamless integration into ventilation systems, ensuring efficient airflow.

Wide Operating Range: Suitable for use in ambient temperatures ranging from -20°C to +50°C, providing versatility across various environments.

Versatile Application: Ideal for duct operations in diverse settings such as shops, pubs, schools, hotels, offices, restaurants, kitchens, and factories.

Clean Air Circulation: Ensures the circulation of clean and odorless air, contributing to a healthier indoor environment.

| | |
|-------------------------------|---------------------------|
| MOTOR INSULATION CLASS | F CLASS |
| MOTOR PROTECTION CLASS | IP 44 |
| ENGINE EFFICIENCY CLASS | IE 3 |
| ENGINE TYPE | EXTERNAL ROTOR MOTOR |
| MOTOR BRAND | HAVALAN |
| BODY MATERIAL | GALVANIZED SHEET |
| BODY COATING | – |
| IMPELLER MATERIAL | GALVANIZED SHEET |
| DUTY CYCLE | IEC DUTY CYCLE-S1 |
| OPERATING TEMPERATURE | -20 - + 50 °C |
| STANDARDS | IEC-60335-2-80,ISO 1940-1 |



| Type | Input power | Voltage | Air flow | Noise level | Transfer | Current | Capacitance | Net weight | Price |
|-----------------|-------------|---------|---------------------|-------------|----------|---------|-------------|------------|-------------|
| | (w) | (v) | (m ³ /h) | dB(A) | (r/min) | (A) | (µF) | (kg) | (USD) |
| HRAD 100 | 80 | 230 | 290 | 47 | 2600 | 0.3 | 2 | 2.6 | \$38 |
| HRAD 125 | 80 | 230 | 410 | 47 | 2600 | 0.36 | 2.5 | 2.7 | \$43 |
| HRAD 150 | 85 | 230 | 700 | 50 | 2600 | 0.38 | 2.5 | 3.2 | \$46 |
| HRAD 160 | 85 | 230 | 710 | 51 | 2600 | 0.38 | 2.5 | 3.2 | \$46 |
| HRAD 200 | 122 | 230 | 1000 | 52 | 2675 | 0.55 | 4 | 4.8 | \$63 |
| HRAD 250 | 145 | 230 | 1120 | 54 | 2685 | 0.63 | 5 | 5.3 | \$69 |
| HRAD 315 | 210 | 230 | 1750 | 57 | 2615 | 1.1 | 7 | 6.9 | \$84 |



External Motor Rectangular Duct Type Fan

Duct-Type Aspirators are designed with an external engine configuration, allowing for efficient airflow without compromising energy consumption. Their unique design enables direct mounting onto prismatic ducts, making them ideal for ambient ventilation applications.

Key Features:

Energy Efficiency: Engineered for low energy consumption, providing cost-effective ventilation solutions.

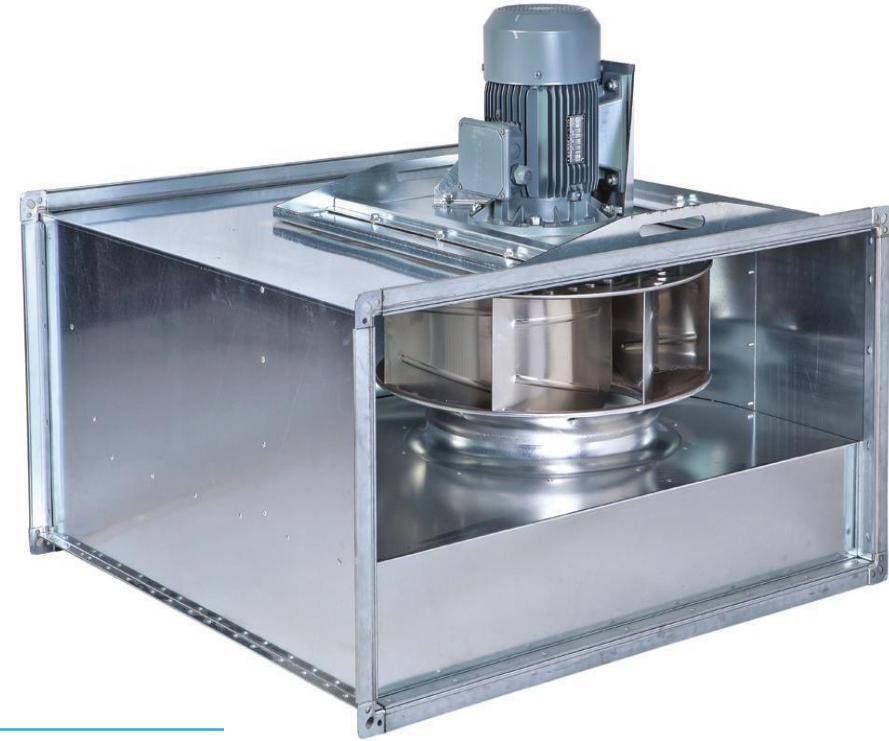
Direct Mounting: Designed to be mounted directly onto prismatic ducts, simplifying installation and ensuring optimal airflow.

Engine Protection: With the engine positioned outside the airflow, it remains unaffected by foreign substances present in the passing air, enhancing durability and longevity.

Applications:

- Ambient Ventilation
- Industrial Facilities
- Commercial Buildings
- Residential Spaces
- Office Environments

| | |
|-------------------------------|---------------------------|
| MOTOR INSULATION CLASS | F CLASS |
| MOTOR PROTECTION CLASS | IP 44 |
| ENGINE EFFICIENCY CLASS | IE & IE3 |
| ENGINE TYPE | TEFC |
| MOTOR BRAND | GAMAK-VOLT-WATT |
| BODY MATERIAL | GALVANIZED SHEET |
| BODY COATING | - |
| IMPELLER MATERIAL | GALVANIZED SHEET |
| DUTY CYCLE | IEC DUTY CYCLE-S1 |
| OPERATING TEMPERATURE | -20 - + 50 °C |
| STANDARDS | IEC-60335-2-80,ISO 1940-1 |



| Type | Input power (Kw) | Air flow (m ³ /h) | Transfer (r/min) | width mm | long mm | height mm | Height with motor mm | Net weight (kg) | Price (USD) |
|------------------|---------------------|---------------------------------|---------------------|-------------|------------|--------------|----------------------------|-----------------------|----------------|
| HDREC 280 | 0.18 | 1150 | 1400 | 500 | 250 | 565 | 450 | 28 | \$379 |
| HDREC 315 | 0.25 | 1600 | 1400 | 500 | 250 | 565 | 476 | 32 | \$423 |
| HDREC 355 | 0.37 | 2300 | 1400 | 600 | 300 | 760 | 526 | 34 | \$450 |
| HDREC 400 | 0.55 | 3300 | 1400 | 600 | 350 | 750 | 590 | 38 | \$511 |
| HDREC 450 | 0.75 | 5000 | 1400 | 700 | 400 | 790 | 641 | 49 | \$603 |
| HDREC 500 | 1.1 | 7000 | 1400 | 800 | 500 | 900 | 765 | 63 | \$706 |
| HDREC 560 | 1.5 | 9800 | 1400 | 1000 | 500 | 1050 | 790 | 74 | \$900 |



In-Line Rectangular Duct Fan

Duct-Type Aspirators are engineered with an external engine configuration, ensuring efficient ambient ventilation with minimal energy consumption. Their unique design allows for direct mounting onto prismatic ducts, providing versatile installation options.

Key Features:

Energy Efficiency: Designed for low energy consumption, offering cost-effective ventilation solutions.

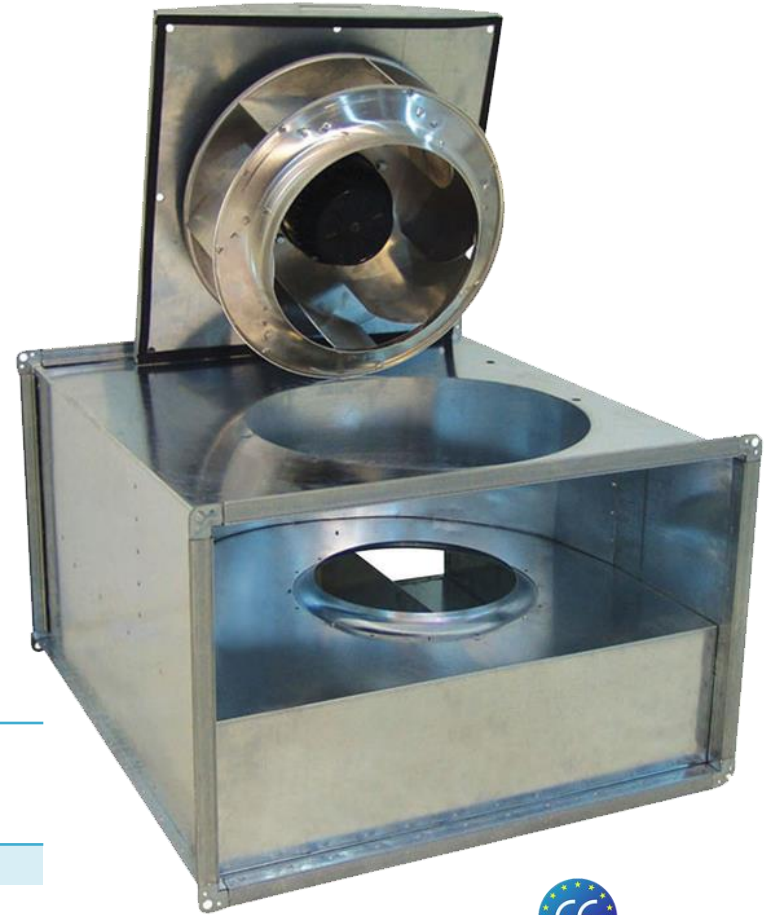
Direct Mounting: Structure allows for easy mounting directly onto prismatic ducts, simplifying installation processes.

Engine Protection: With the engine positioned outside the airflow, it remains unaffected by foreign substances present in the passing air, ensuring reliable performance and longevity.

Applications:

- Ambient Ventilation Systems
- Commercial Buildings
- Industrial Facilities
- Residential Spaces
- Office Environments

| | |
|-------------------------------|---------------------------|
| MOTOR INSULATION CLASS | F CLASS |
| MOTOR PROTECTION CLASS | IP 44 |
| ENGINE EFFICIENCY CLASS | IE 3 |
| ENGINE TYPE | EXTERNAL ROTOR MOTOR |
| MOTOR BRAND | HAVALAN |
| BODY MATERIAL | GALVANIZED SHEET |
| BODY COATING | - |
| IMPELLER MATERIAL | GALVANIZED SHEET |
| DUTY CYCLE | IEC DUTY CYCLE-S1 |
| OPERATING TEMPERATURE | -20 - + 50 °C |
| STANDARDS | IEC-60335-2-80,ISO 1940-1 |



| Type | Input power | Air flow | Transfer | width | long | height | Noise level | Net weight | Price |
|---------------------|-------------|---------------------|----------|-------|------|--------|-------------|------------|--------------|
| | (w) | (m ³ /h) | (r/min) | mm | mm | mm | dB(A) | (kg) | (USD) |
| HREC 30-15 | 90 | 520 | 2630 | 150 | 300 | 400 | 70 | 7 | \$94 |
| HREC 40-20-A | 104 | 950 | 2645 | 200 | 400 | 500 | 73 | 10 | \$121 |
| HREC 40-20-B | 130 | 1150 | 2675 | 200 | 400 | 500 | 75 | 11 | \$129 |
| HREC 50-25 | 180 | 1600 | 2635 | 250 | 500 | 565 | 78 | 15 | \$163 |
| HREC 60-30 | 147 | 2350 | 1440 | 300 | 600 | 760 | 70 | 29 | \$276 |
| HREC 60-35 | 380 | 3400 | 1420 | 350 | 600 | 765 | 83 | 32 | \$312 |
| HREC 70-40 | 690 | 5000 | 1435 | 400 | 700 | 790 | 83 | 46 | \$480 |
| HREC 80-50 | 1080 | 7000 | 1350 | 500 | 800 | 900 | 86 | 66 | \$639 |
| HREC 100-50 | 1670 | 9300 | 1350 | 500 | 1000 | 1050 | 86 | 84 | \$824 |



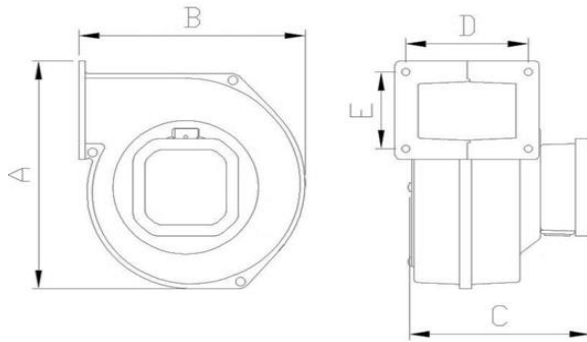
P R O K T E S

SNAIL FANS



Forward Curved Aluminum Body Snail Fans

It is generally preferred in local cooling applications. It is used in industrial areas such as dc motor cooling processes, laboratories, buildings, residences, cooling of electrical panels in cooling boilers of machines, and solid fuel boilers. Thanks to their compact structure, they save space. It offers excellent solutions in local cooling applications and heating systems. It is high quality and long-lasting. It has a low noise level, a durable body structure, and high-pressure characteristics. It is combined with durable materials.



| | |
|-------------------------|---------------------------|
| MOTOR INSULATION CLASS | F CLASS |
| MOTOR PROTECTION CLASS | IP 44 |
| ENGINE EFFICIENCY CLASS | IE 3 |
| ENGINE TYPE | EXTERNAL ROTOR MOTOR |
| MOTOR BRAND | HAVALAN |
| BODY MATERIAL | ALUMINIUM |
| BODY COATING | - |
| IMPELLER MATERIAL | GALVANIZED SHEET |
| DUTY CYCLE | IEC DUTY CYCLE-S1 |
| OPERATING TEMPERATURE | -20 - + 50 °C |
| STANDARDS | IEC-60335-2-80,ISO 1940-1 |



| Type | Input power | Voltage | Blowing | width | long | height | transfer | Price |
|----------|-------------|---------|---------|---------|-------|--------|----------|-------------|
| | (w) | (v) | (E*D)mm | (A)mm | (B)mm | mm | (r/min) | (USD) |
| HASF 120 | 84 | 230 | 275 | 70x90 | 190 | 175 | 2450 | \$46 |
| HASF 140 | 137 | 230 | 485 | 105x115 | 260 | 225 | 2265 | \$54 |
| HASF 160 | 193 | 230 | 600 | 105x115 | 260 | 225 | 2100 | \$61 |



LOW PRESSURE SNAIL FANS

Snail fans are generally preferred for the cleaning of dust particles that occur in workshops and working environments from the air. It is the ideal choice for high performance and smooth operation.

| | |
|-------------------------------|---------------------------|
| MOTOR INSULATION CLASS | F CLASS |
| MOTOR PROTECTION CLASS | IP 44 |
| ENGINE EFFICIENCY CLASS | IE 3 |
| ENGINE TYPE | EXTERNAL MOTOR |
| MOTOR BRAND | ELK- GAMAK |
| BODY MATERIAL | GALVANIZED SHEET |
| BODY COATING | - |
| IMPELLER MATERIAL | GALVANIZED SHEET |
| DUTY CYCLE | IEC DUTY CYCLE-S1 |
| OPERATING TEMPERATURE | -20 - + 70 °C |
| STANDARDS | IEC-60335-2-80,ISO 1940-1 |



| Type | Input power (kw) | Air flow (m ³ /h) | Current (A) | Frequency (Hz) | Weight (kg) | long (F)mm | height (C)mm | transfer (r/min) | Price (USD) |
|---------|---------------------|---------------------------------|----------------|-------------------|----------------|---------------|-----------------|---------------------|----------------|
| HABSF 1 | 0.37 | 1,500 | 0.87 | 50 | 27,2 | 700 | 500 | 1450 | \$ 291 |
| HABSF 2 | 0.75 | 2,500 | 1.6 | 50 | 33,9 | 700 | 500 | 1450 | \$ 336 |
| HABSF 3 | 1.1 | 4,500 | 1.92 | 50 | 40,8 | 800 | 585 | 1450 | \$ 390 |
| HABSF 4 | 1.5 | 7,000 | 3.5 | 50 | 50,7 | 840 | 570 | 1450 | \$ 438 |
| HABSF 5 | 2.2 | 6,000 | 4.9 | 50 | 63 | 920 | 635 | 1450 | \$ 527 |
| HABSF 6 | 3 | 7,000 | 6.7 | 50 | 66 | 920 | 635 | 1450 | \$ 569 |
| HABSF 7 | 4 | 8,000 | 8.4 | 50 | 69,8 | 950 | 665 | 1450 | \$ 688 |
| HABSF 8 | 5.5 | 9,000 | 11.5 | 50 | 97,4 | 1025 | 710 | 1450 | \$ 874 |
| HABSF 9 | 7.5 | 12,000 | 16 | 50 | 120,6 | 1150 | 710 | 1450 | \$ 999 |



Rare Blade Low Pressure Snail Fans

It is preferred for the removal of large dust particles, sawdust, and marble particles from the air in workshops and working environments. It is also used for the ventilation of dusty and oily environments. The rare blades ensure that the particles in the environment are collected between the propellers and that the operation of the fan is not adversely affected and that any situation shortening the life of the fan is not experienced.

| | |
|----------------------|------------------------------|
| MOTOR YALITIM SINIFI | F CLASS |
| MOTOR KORUMA SINIFI | IP 55 |
| MOTOR VERİM SINIFI | IE2-IE3 |
| MOTOR TİPİ | AC-TEFC |
| MOTOR MARKASI | ELK- GAMAK |
| GÖVDE MALZEMESİ | DKP SHEET METAL |
| GÖVDE KAPLAMASI | ELECTROSTATIC POWDER COATING |
| PERVANE MALZAMESİ | DKP SHEET METAL |
| GÖREV DÖNGÜSÜ | IEC DUTY CYCLE-S1 |
| ÇALIŞMA SICAKLIĞI | -20 - + 50 °C |
| STANDARTLAR | IEC-60335-2-80,ISO 1940-1 |



| Type | Input Power | Air flow | Voltage | Frequency | Current | Pressure | Transfer | Price |
|------------|-------------|----------|---------|-----------|---------|----------|----------|----------|
| | kW | m3/h | (V) | (Hz) | (A) | Pa | RPM | (USD) |
| HSAL 280-1 | 0.25 | 1,200 | 380 | 50 | 0.87 | 150 | 1400 | \$ 546 |
| HSAL 280-2 | 1.1 | 2,850 | 380 | 50 | 2.6 | 200 | 2800 | \$ 566 |
| HSAL 315-1 | 0.37 | 1,650 | 380 | 50 | 1.2 | 150 | 1400 | \$ 604 |
| HSAL 315-2 | 2.2 | 4,000 | 380 | 50 | 4 | 300 | 2800 | \$ 677 |
| HSAL 355-1 | 0.55 | 2,500 | 380 | 50 | 1.6 | 200 | 1400 | \$ 651 |
| HSAL 355-2 | 3 | 5,900 | 380 | 50 | 6.6 | 300 | 2800 | \$ 748 |
| HSAL 400-1 | 0.75 | 3,850 | 380 | 50 | 2 | 200 | 1400 | \$ 730 |
| HSAL 400-2 | 5.5 | 8,700 | 380 | 50 | 8.4 | 350 | 2800 | \$ 1.013 |
| HSAL 450 | 1.1 | 6,000 | 380 | 50 | 2.6 | 200 | 1400 | \$ 892 |
| HSAL 500 | 1.5 | 8,600 | 380 | 50 | 3.5 | 200 | 1400 | \$ 1.168 |
| HSAL 560 | 3 | 12,000 | 380 | 50 | 6.6 | 300 | 1400 | \$ 1.000 |
| HSAL 630 | 5.5 | 17,800 | 380 | 50 | 8.4 | 300 | 1400 | \$ 1.191 |
| HSAL 710 | 11 | 28,000 | 380 | 50 | — | 350 | 1400 | \$ 1.550 |



Backward Curved Centrifugal fans Belt Drive

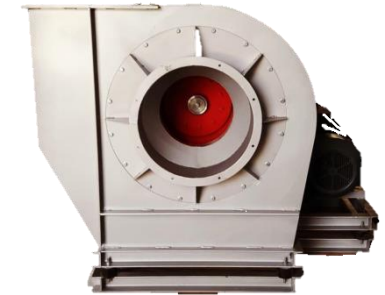
Heavy construction BCC (backward curved centrifugal) fans are commonly used for the transportation of clean air or heavy dust laden air in a ducted system.

Sizes range from 315mm to 1000mm. These units are normally mounted on a base.

These fans are always belt driven which allows for a very large scale of various permutations for both volume and pressure.

Changing pulley diameters can deliver any required volume and pressure within the speed limitations of the fan.

| | |
|-------------------------|---------------------------|
| MOTOR INSULATION CLASS | F CLASS |
| MOTOR PROTECTION CLASS | IP 44 |
| ENGINE EFFICIENCY CLASS | IE 3 |
| ENGINE TYPE | EXTERNAL MOTOR |
| MOTOR BRAND | HAVALAN |
| BODY MATERIAL | GALVANIZED SHEET |
| BODY COATING | - |
| IMPELLER MATERIAL | GALVANIZED SHEET |
| DUTY CYCLE | IEC DUTY CYCLE-S1 |
| OPERATING TEMPERATURE | -20 - + 70 °C |
| STANDARDS | IEC-60335-2-80,ISO 1940-1 |



| Type | Input power | Air flow | Pressure | Voltage | Noise level | Transfer | Speed | Price |
|----------|-------------|---------------------|----------|---------|-------------|----------|-------|-----------------|
| | (kw) | (m ³ /h) | (Pa) | (V) | (dB) | (r/min) | M/S | (EUR) |
| HKKSF-1A | 0.25 | 1,250 | 450 | 380 | 68 | 1500 | 9 | \$ 2.267 |
| HKKSF-1 | 0.37 | 2,200 | 450 | 380 | 72 | 1500 | 10 | \$ 2.534 |
| HKKSF-2A | 0.55 | 2,700 | 450 | 380 | 80 | 1500 | 10 | \$ 2.655 |
| HKKSF-2 | 0.75 | 4,200 | 450 | 380 | 83 | 1500 | 11 | \$ 2.750 |
| HKKSF-3 | 1.1 | 6,400 | 500 | 380 | 84 | 1500 | 13 | \$ 2.920 |
| HKKSF-4 | 1.5 | 6,900 | 800 | 380 | 87 | 1500 | 13.5 | \$ 3.258 |
| HKKSF-5 | 2.2 | 9,300 | 800 | 380 | 90 | 1500 | 15 | \$ 3.668 |
| HKKSF-6 | 3 | 12,500 | 1,600 | 380 | 91 | 1500 | 16 | \$ 3.978 |
| HKKSF-7 | 4 | 14,000 | 1,600 | 380 | 93 | 1500 | 16.5 | \$ 4.283 |
| HKKSF-8 | 5.5 | 18,000 | 1,600 | 380 | 95 | 1500 | 18 | \$ 5.116 |
| HKKSF-9 | 7.5 | 20,000 | 1,600 | 380 | 97 | 1500 | 19 | \$ 5.503 |
| HKKSF-10 | 11 | 22,000 | 1,800 | 380 | 99 | 1500 | 19.5 | \$ 5.671 |
| HKKSF-11 | 15 | 30,000 | 1,800 | 380 | 101 | 1500 | 22 | \$ 6.829 |
| HKKSF-12 | 18.5 | 32,000 | 1,800 | 380 | 103 | 1500 | 22.5 | \$ 8.567 |



Range of High pressure centrifugal fans with backward curved impeller

These fans provide high performance in transporting large particulate ash dust and evacuate without accumulation of material on the blade thanks to its open blade structure.
Use: for the aspiration of very dusty air containing various types of materials.

The level of use of this series of ventilators is extremely high in the following industries:
sawmills/joineries: for the transportation of sawdust and wood chips;
tanneries: for the transportation of leather trimmings and shavings;
bookbinderies: for the transportation of paper trimmings;
textile industries: for the transportation of yarn waste and long fibers;
industries for the working of plastics: for the transportation of granulates and of nylon trimmings; for the loading of solid combustibles into boilers, etc.

| | |
|----------------------|---------------------------|
| MOTOR YALITIM SINIFI | F CLASS |
| MOTOR KORUMA SINIFI | IP 44 |
| MOTOR VERİM SINIFI | IE 3 |
| MOTOR TİPİ | EXTERNAL MOTOR |
| MOTOR MARKASI | ELK- GAMAK |
| GÖVDE MALZEMESİ | GALVANIZED SHEET |
| GÖVDE KAPLAMASI | - |
| PERVANE MALZAMESİ | GALVANIZED SHEET |
| GÖREV DÖNGÜSÜ | IEC DUTY CYCLE-S1 |
| ÇALIŞMA SICAKLIĞI | -20 - + 70 °C |
| STANDARTLAR | IEC-60335-2-80,ISO 1940-1 |



| Type | Input power (kw) | Air flow (m ³ /h) | Voltage (v) | Frequency (HZ) | Current (A) | Pressure (pa) | transfer (r/min) | Price (EUR) |
|-------------------|---------------------|---------------------------------|----------------|-------------------|----------------|------------------|---------------------|-----------------|
| HYBN 500 | 5.5 | 3,500 | 380 | 50 | 10 | 3,000 | 2,935 | \$ 893 |
| HYBN 560-1 | 7.5 | 5,500 | 380 | 50 | 13.3 | 3,000 | 2,930 | \$ 1.197 |
| HYBN 560-2 | 11 | 5,500 | 380 | 50 | 19 | 4,000 | 2,940 | \$ 1.367 |
| HYBN 630-1 | 15 | 5,500 | 380 | 50 | 27 | 4,700 | 2,950 | \$ 1.624 |
| HYBN 630-2 | 18.5 | 5,500 | 380 | 50 | 32 | 5,500 | 2,935 | \$ 1.942 |



PVC Fume Exhaust Fans

PVC fume exhaust fans are used in applications such as, but not limited to:

Acid Scrubbers
Plating Scrubbers
Pickling Lines
Acid Dip Tanks
Sulfuric Acid Exhaust
Wastewater Treatment Plants
Analytical Laboratories
Battery Manufacturing
Pharmaceutical Laboratories
Pulp and Paper Plants
Metal Finishing
Laboratory Hood Exhaust

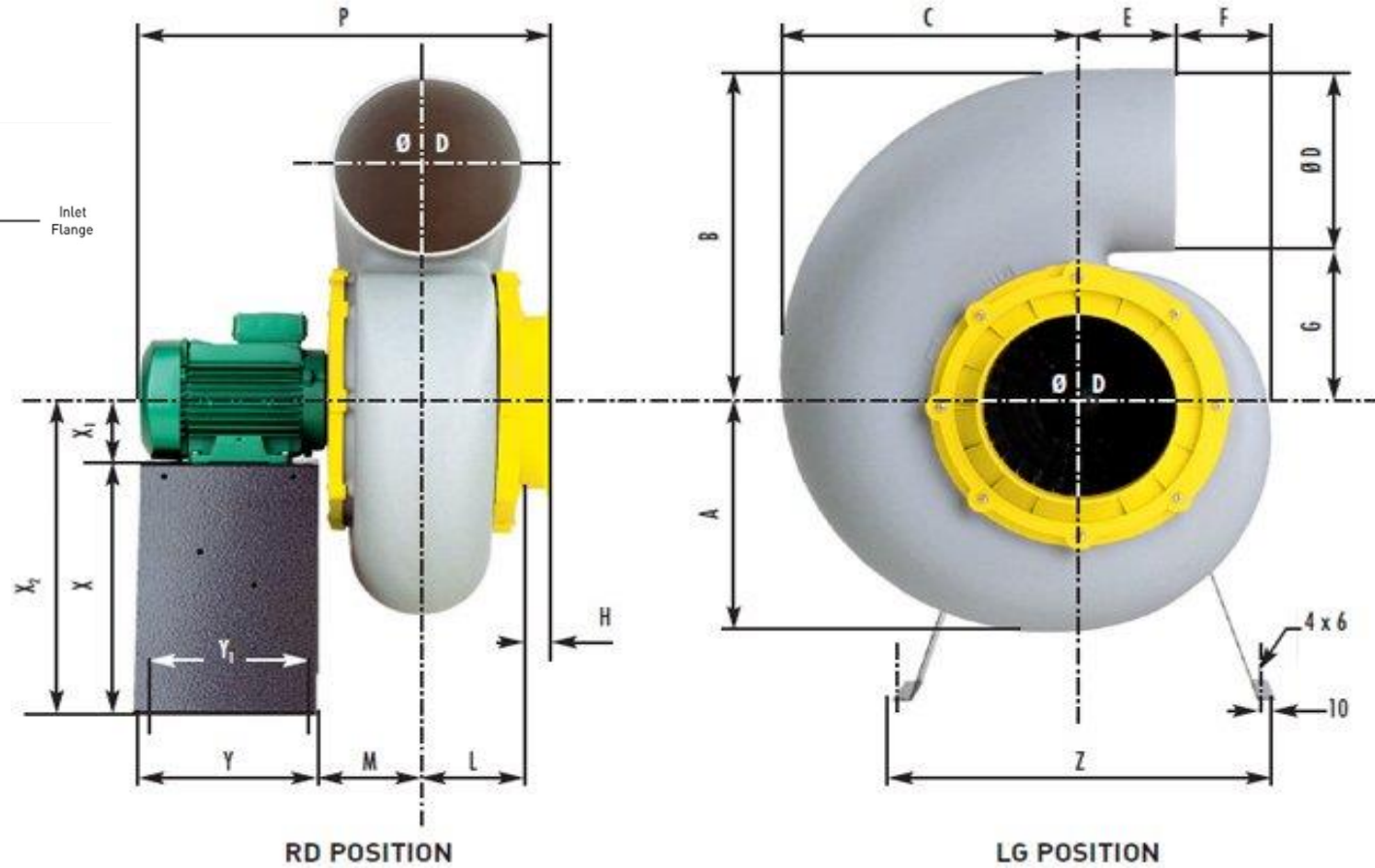
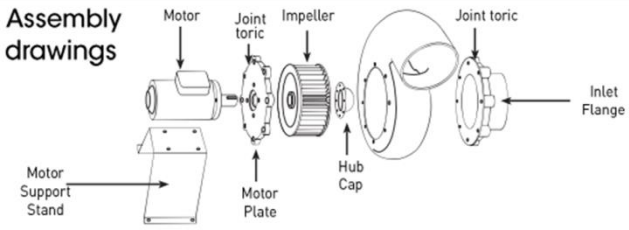
| | |
|----------------------|-------------------|
| MOTOR YALITIM SINIFI | F CLASS |
| MOTOR KORUMA SINIFI | IP 55 |
| MOTOR VERİM SINIFI | - |
| MOTOR TİPİ | - |
| MOTOR MARKASI | - |
| GÖVDE MALZEMESİ | Plastic |
| GÖVDE KAPLAMASI | - |
| PERVANE MALZEMESİ | Plastic |
| GÖREV DÖNGÜSÜ | IEC DUTY CYCLE-S1 |
| ÇALIŞMA SICAKLIĞI | -20 - + 85°C |



| Type | Input power | Air flow | Voltage | Frequency | Noise Level | transfer | Price |
|---------|-------------|---------------------|---------|-----------|-------------|----------|----------------|
| | (kw) | (m ³ /h) | (v) | (HZ) | (dB) | (r/min) | (EUR) |
| HSAP 15 | 0.37 | 870 | 380 | 50 | 73 | 2870 | \$502 |
| HSAP 20 | 1.1 | 2,000 | 380 | 50 | 73 | 2870 | \$584 |
| HSAP 25 | 2.2 | 3,450 | 380 | 50 | 73 | 2870 | \$898 |
| HSAP 30 | 1.1 | 4,850 | 380 | 50 | 73 | 1450 | \$1.036 |
| HSAP 35 | 5.5 | 10,500 | 380 | 50 | 73 | 1450 | \$2.373 |



DRAWING



| MODEL | A (mm) | B (mm) | C (mm) | D Ø (mm) | E (mm) | F (mm) | G (mm) | H (mm) | L (mm) | M (mm) | P (mm) | Y (mm) | Y1 (mm) | Z (mm) | X (mm) | X1 (mm) | X2 (mm) |
|---------|--------|--------|--------|----------|--------|--------|--------|--------|--------|--------|--------|--------|---------|--------|--------|---------|---------|
| HSAP 15 | 170 | 240 | 203 | 125 | 100 | 32 | 115 | 30 | 70 | 80 | 360 | 180 | 160 | 340 | 240 | 71 | 311 |
| HSAP 20 | 208 | 303 | 240 | 160 | 100 | 57 | 143 | 32 | 84 | 94 | 390 | 180 | 160 | 340 | 240 | 71 | 311 |
| HSAP 25 | 248 | 365 | 310 | 200 | 103 | 92 | 165 | 35 | 95 | 105 | 430 | 180 | 160 | 420 | 300 | 71 | 311 |
| HSAP 30 | 300 | 450 | 373 | 250 | 117 | 112 | 198 | 35 | 110 | 120 | 510 | 240 | 220 | 460 | 370 | 80 | 450 |
| HSAP 35 | 370 | 570 | 450 | 315 | 130 | 170 | 255 | 60 | 150 | 170 | 792 | 402 | 314 | 600 | 468 | 112 | 580 |

P R O K T E S

Heat Recovery Units



Heat Recovery Units

Heat recovery units are devices produced in order to save energy in neighborhoods where fresh air is required. In the summer, the cooled air in the environment is expelled, and the fresh air to be taken in is cooled. In winter, while the hot air in the environment is expelled, the cold air to be taken in is heated. Thus, energy is saved. No energy source is used while making transactions. Air to air heat recovery is provided.

| | |
|-------------------------------|---------------------------|
| MOTOR INSULATION CLASS | F CLASS |
| MOTOR PROTECTION CLASS | IP 44 |
| ENGINE EFFICIENCY CLASS | IE 3 |
| ENGINE TYPE | INTERNAL ROTOR MOTOR |
| MOTOR BRAND | HAVALAN |
| BODY MATERIAL | GALVANIZED SHEET |
| BODY COATING | - |
| IMPELLER MATERIAL | ALUMINUM |
| DUTY CYCLE | IEC DUTY CYCLE-S1 |
| OPERATING TEMPERATURE | -20 - + 50 °C |
| STANDARDS | IEC-60335-2-80,ISO 1940-1 |



| Type | Input power | Air flow | width | long | height | Suction (∅) | Heater power | Price |
|---------|-------------|---------------------|-------|-------|--------|-------------|--------------|----------------|
| | (w) | (m ³ /h) | (E)mm | (F)mm | (C)mm | (D)mm | (kw) | (USD) |
| HIGK 10 | 250 | 1000 | 930 | 670 | 320 | 250 | 3 | \$810 |
| HIGK 20 | 400 | 2000 | 1140 | 985 | 420 | 300 | 6 | \$948 |
| HIGK 30 | 780 | 3000 | 1710 | 1160 | 440 | 355 | 9 | \$1.482 |
| HIGK 40 | 1300 | 4000 | 1650 | 1130 | 520 | 400 | 12 | \$1.714 |
| HIGK 50 | 1700 | 5000 | 1850 | 1220 | 530 | 450 | 15 | \$2.167 |



OPTIONS



CONTROL PANEL

| MODEL | PRICE(USD) |
|-------|------------|
| 10 | \$228 |
| 20 | \$228 |
| 30 | \$228 |
| 40 | \$228 |
| 50 | \$228 |



ELECTRIC HEATER

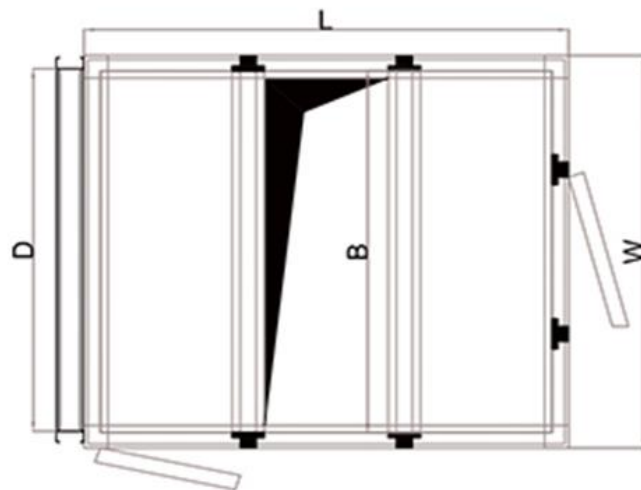
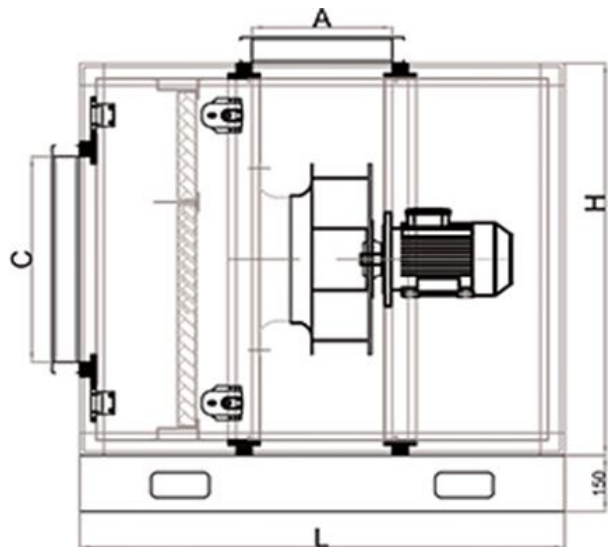
| MODEL | PRICE(USD) |
|---------------|------------|
| 3 kW - 380 V | \$246 |
| 6 kW - 380 V | \$318 |
| 9 kW - 380 V | \$459 |
| 12 kW - 380 V | \$541 |
| 15 kW - 380 V | \$683 |

P R O K T E S

CABINET TYPE FANS



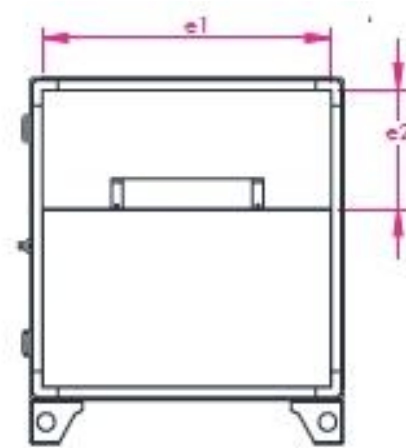
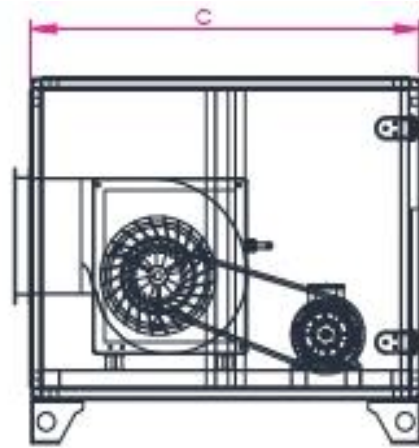
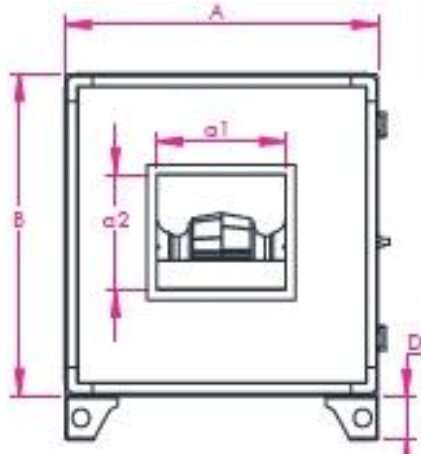
DIRECT COUPLED COMPACT RADIAL CELL FAN WITH PLUG



| Type | FAN | Input power | Air flow | transfer | Pressure | Size of cabinet | Suction input | Fire input | Price |
|---------|-------|-------------|---------------------|----------|----------|-----------------|---------------|------------|----------|
| | Model | (kw) | (m ³ /h) | (r/min) | pa | (L*W)mm | (C) mm | (A)mm | (USD) |
| HHDR-1 | 280 | 0.37 | 1,350 | 1450 | 200 | 800x650 | 300x570 | 300x570 | \$ 678 |
| HHDR-2 | 280 | 1.1 | 2,500 | 2800 | 400 | 800x650 | 300x570 | 300x570 | \$ 689 |
| HHDR-3 | 315 | 0.37 | 1,350 | 1450 | 200 | 800x650 | 300x570 | 300x570 | \$ 686 |
| HHDR-4 | 315 | 2.2 | 3,850 | 2800 | 400 | 900x650 | 320x570 | 320x570 | \$ 787 |
| HHDR-5 | 355 | 0.55 | 2,500 | 1450 | 200 | 900x650 | 350x570 | 350x570 | \$ 737 |
| HHDR-6 | 355 | 3 | 5,700 | 2800 | 400 | 1000x650 | 350x570 | 350x570 | \$ 847 |
| HHDR-7 | 400 | 0.75 | 3,850 | 1450 | 200 | 1200x940 | 400x860 | 400x860 | \$ 1.023 |
| HHDR-8 | 450 | 1.1 | 6,000 | 1450 | 200 | 1200x940 | 420x860 | 420x860 | \$ 1.051 |
| HHDR-9 | 500 | 1.5 | 8,600 | 1450 | 200 | 1200x940 | 450x860 | 450x860 | \$ 1.097 |
| HHDR-10 | 560 | 3 | 12,700 | 1450 | 200 | 1400x1000 | 500x920 | 500x920 | \$ 1.383 |
| HHDR-11 | 630 | 5.5 | 17,800 | 1450 | 300 | 1600x1210 | 650x1130 | 650x1130 | \$ 2.105 |
| HHDR-12 | 710 | 11 | 28,500 | 1450 | 300 | 1600x1210 | 700x1130 | 700x1130 | \$ 2.532 |



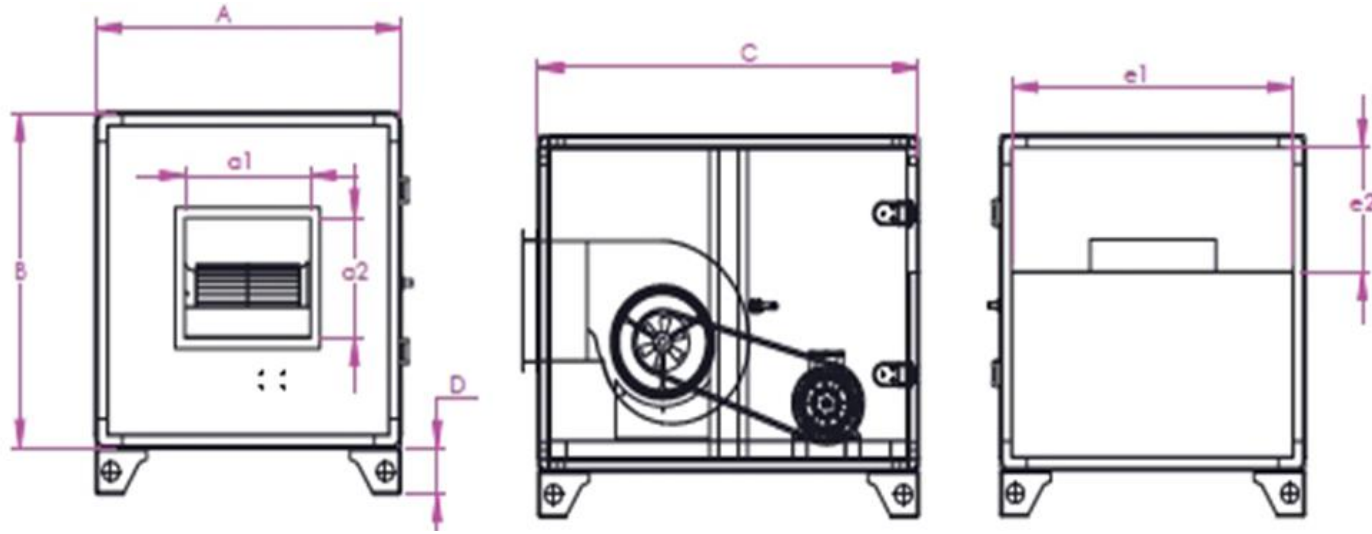
SPARE AND DENSE BLADE CELL FAN



| Type | FAN | Input power | Air flow | Transfer | Pressure | Size of cabinet | Suction input | Fire input | Price |
|-----------|-------|-------------|---------------------|----------|----------|-----------------|---------------|------------|-----------------|
| | Model | (kw) | (m ³ /h) | (r/min) | pa | (C*A*B)mm | (e1*e2) mm | (a1*a2)mm | (USD) |
| HCA-250 | 250R | 1.1 | 3,500 | 3000 | 300 | 900X700X700 | 620X230 | 322X322 | \$ 988 |
| HCA-280 | 280R | 1.5 | 5,500 | 3000 | 300 | 1000x800x800 | 720x280 | 360x360 | \$ 1.149 |
| HCA-315-A | 315R | 2.2 | 8,000 | 3000 | 300 | 1100x900x900 | 820x330 | 404x404 | \$ 1.328 |
| HCA-315-B | 315R | 3 | 9,000 | 3000 | 300 | 1100x900x900 | 820x330 | 404x404 | \$ 1.382 |
| HCA-355-A | 355R | 3 | 9,500 | 3000 | 300 | 1200x1000x1000 | 920x380 | 453x453 | \$ 1.441 |
| HCA-355-B | 355R | 4 | 12,000 | 3000 | 300 | 1200x1000x1000 | 920x380 | 453x453 | \$ 1.519 |
| HCA-400-A | 400R | 4 | 14,000 | 3000 | 300 | 1300x1100x1100 | 1020x430 | 507x507 | \$ 1.847 |
| HCA-400-B | 400R | 5.5 | 15,000 | 3000 | 300 | 1300x1100x1100 | 1020x430 | 507x507 | \$ 1.966 |
| HCA-450-A | 450R | 5.5 | 18,000 | 1500 | 300 | 1400x1200x1200 | 1120x480 | 570x570 | \$ 2.177 |
| HCA-450-B | 450R | 7.5 | 19,000 | 1500 | 500 | 1400x120x1200 | 1120x480 | 570x570 | \$ 2.253 |
| HCA-500 | 500R | 7.5 | 23,000 | 1500 | 300 | 1500x1300x1300 | 1220x530 | 638x638 | \$ 2.448 |
| HCA-560-A | 560R | 7.5 | 26,000 | 1500 | 300 | 1600x1400x1400 | 1320x580 | 638x638 | \$ 3.296 |
| HCA-560-B | 560R | 11 | 30,000 | 1500 | 400 | 1600x1400x1400 | 1320x580 | 715x715 | \$ 3.609 |
| HCA-630 | 630R | 11 | 35,000 | 1500 | 300 | 1700x1500x1500 | 1420x630 | 800x800 | \$ 3.878 |



DENSE BLADE CELL FAN

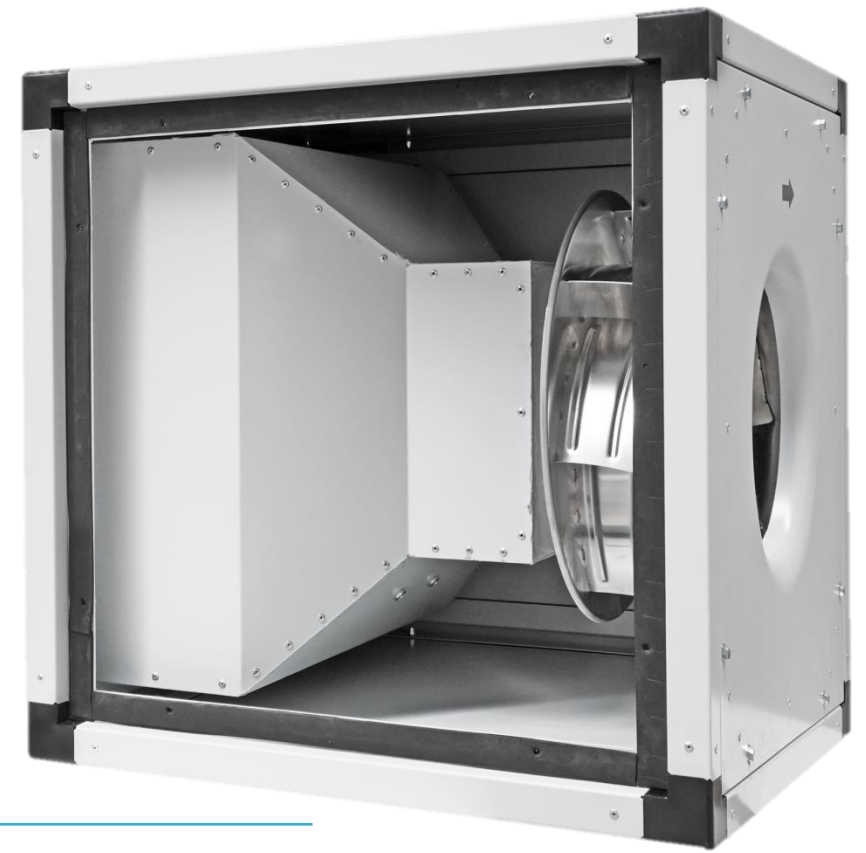


| Type | FAN Model | Input power (kw) | Air flow (m ³ /h) | transfer (r/min) | Pressure (pa) | Size of cabinet (A*B*C)mm | Suction input (e1*e2) mm | Fire input (a1*a2)mm | Price (USD) |
|--------|-----------|------------------|------------------------------|------------------|---------------|---------------------------|--------------------------|----------------------|-------------|
| HCS-1 | 7x7 | 0.75 | 2,000 | 1450 | 400 | 850x600x600 | 520x180 | 259x238 | \$ 784 |
| HCS-2 | 7x7 | 1.1 | 3,000 | 1450 | 300 | 850x600x600 | 520x180 | 259x238 | \$ 736 |
| HCS-3 | 9x9 | 1.5 | 4,000 | 1450 | 400 | 950x700x700 | 620x230 | 298x262 | \$ 849 |
| HCS-4 | 9x9 | 2.2 | 5,000 | 1450 | 400 | 950x700x700 | 620x230 | 298x262 | \$ 888 |
| HCS-5 | 10x10 | 2.2 | 6,000 | 1450 | 450 | 1050x750x750 | 720x280 | 330x290 | \$ 985 |
| HCS-6 | 10x10 | 3 | 7,000 | 1450 | 450 | 1050x750x750 | 720x280 | 330x290 | \$ 1.019 |
| HCS-7 | 12x12 | 3 | 8,500 | 1450 | 400 | 1100x850x850 | 820x330 | 395x340 | \$ 1.143 |
| HCS-8 | 12x12 | 4 | 10,000 | 1450 | 400 | 1100x850x850 | 820x330 | 395x340 | \$ 1.207 |
| HCS-9 | 15x15 | 4 | 12,000 | 1450 | 400 | 1200x900x900 | 820x350 | 470x405 | \$ 1.207 |
| HCS-10 | 15x15 | 5.5 | 14,000 | 1450 | 450 | 1200x900x900 | 820x350 | 470x405 | \$ 1.374 |
| HCS-11 | 18x18 | 5.5 | 16,000 | 1450 | 450 | 1600x1200x1200 | 920x380 | 560x480 | \$ 1.650 |
| HCS-12 | 18x18 | 7.5 | 18,000 | 1450 | 450 | 1600x1200x1200 | 920x380 | 560x480 | \$ 1.720 |
| HCS-13 | 18x18 | 11 | 20,000 | 1450 | 450 | 1600x1200x1200 | 920x380 | 560x480 | \$ 1.997 |



KITCHEN HOOD FANS

| | |
|-------------------------------|---------------------------|
| MOTOR INSULATION CLASS | F CLASS |
| MOTOR PROTECTION CLASS | IP 55 |
| ENGINE EFFICIENCY CLASS | IE 3- IE 2 |
| ENGINE TYPE | TEFC |
| MOTOR TYPE | GAMAK-VOLT-WATT |
| BODY MATERIAL | GALVANIZED SHEET |
| BODY COATING | - |
| IMPELLER MATERIAL | GALVANIZED SHEET |
| DUTY CYCLE | IEC DUTY CYCLE-S1 |
| OPERATING TEMPERATURE | -20 - + 50 °C |
| STANDARDS | IEC-60335-2-80,ISO 1940-1 |



| Type | Input power (kw) | Air flow (m ³ /h) | width (E)mm | long (F)mm | height (C)mm | Transfer (r/min) | Price (USD) |
|----------|---------------------|---------------------------------|----------------|---------------|-----------------|---------------------|----------------|
| HMDF 280 | 0.18 | 1,100 | 450 | 450 | 450 | 1450 | \$434 |
| HMDF 315 | 0.25 | 1,600 | 500 | 500 | 500 | 1469 | \$527 |
| HMDF 355 | 0.37 | 2,300 | 500 | 500 | 500 | 1471 | \$535 |
| HMDF 400 | 0.55 | 3,300 | 600 | 600 | 600 | 1478 | \$607 |
| HMDF 450 | 0.75 | 5,000 | 700 | 700 | 700 | 1454 | \$755 |
| HMDF 500 | 1.1 | 7,000 | 800 | 800 | 800 | 1462 | \$897 |
| HMDF 560 | 1.5 | 9,800 | 900 | 900 | 900 | 1464 | \$1.049 |
| HMDF 630 | 3 | 14,000 | 1000 | 1000 | 1000 | 1465 | \$1.281 |
| HMDF 710 | 4 | 13,000 | 1100 | 1100 | 1100 | 950 | \$1.697 |



P R O K T E S

DOMESTIC FANS



NEW PRODUCT



HPMX Round In-line Duct Fan

HPMX is an ideal choice with its easy installation to the duct, silent operation and low energy consumption. Factory, hospital, office, laboratory, shopping mall, cafe, restaurants, parking lot, etc. It is suitable for use in all structures with a round duct system.

| | |
|-------------------------------|----------------------------|
| MOTOR INSULATION CLASS | F CLASS |
| MOTOR PROTECTION CLASS | IP 44 |
| MOTOR EFFICIENCY CLASS | - |
| MOTOR ENCLOSURE TYPE | AC EXTERNAL ROTOR MOTOR |
| MOTOR BRAND | HAVALAN |
| BODY MATERIAL | PLASTIC |
| BODY COATING | NONE |
| IMPELLER MATERIAL | PLASTIC-MIXED FLOW |
| DUTY CYCLE | IEC Duty Cycle-S1 |
| WORKING AMBIENT TEMPERATURE | -20 - +50 °C |
| DIRECTIVE | IEC-60335-2-80, ISO 1940-1 |



| Type | Input power | Voltage | Air flow | Frequency | Revolution | Noise level | Price |
|-----------------|-------------|---------|---------------------|-----------|------------|-------------|--------------|
| | (w) | (v) | (m ³ /h) | (Hz) | (rpm) | (dB(A)) | (USD) |
| HPMX 100 | 54 | 230 | 234 | 50 | 2,460 | 31 | \$20 |
| HPMX 125 | 56 | 230 | 337 | 50 | 2,560 | 32 | \$20 |
| HPMX 150 | 75 | 230 | 504 | 50 | 2,490 | 33 | \$34 |
| HPMX 160 | 75 | 230 | 560 | 50 | 2,490 | 33 | \$34 |
| HPMX 200 | 111 | 230 | 1.012 | 50 | 2,410 | 34 | \$67 |
| HPMX 250 | 280 | 230 | 1.350 | 50 | 2,460 | 38 | \$122 |
| HPMX 315 | 476 | 230 | 1.970 | 50 | 5,476 | 42 | \$220 |



HAXIS Axial In-line Duct Fan

HAXIS fans can be used when low volume ventilation needs. It is easy to install, has a low noise level and power usage

| | |
|-------------------------------|----------------------------|
| MOTOR INSULATION CLASS | F CLASS |
| MOTOR PROTECTION CLASS | IP 44 |
| MOTOR EFFICIENCY CLASS | IE2-IE3 |
| MOTOR ENCLOSURE TYPE | EXTERNAL ROTOR MOTOR |
| MOTOR BRAND | HAVALAN |
| BODY MATERIAL | GALVANIZED SHEET METAL |
| BODY COATING | ELECTROSTATIC POWDER PAINT |
| IMPELLER MATERIAL | GALVANIZED SHEET METAL |
| DUTY CYCLE | IEC Duty Cycle-S1 |
| WORKING AMBIENT TEMPERATURE | -20 - +50 °C |
| DIRECTIVE | IEC-60335-2-80, ISO 1940-1 |



| Type | Input power | Voltage | Air flow | Frequency | Revolution | Noise level | Price |
|------------------|-------------|---------|---------------------|-----------|------------|-------------|-------------|
| | (w) | (v) | (m ³ /h) | (Hz) | (rpm) | (dB(A)) | (USD) |
| HAXIS 200 | 70 | 230 | 680 | 50 | 2.650 | 50 | \$41 |
| HAXIS 250 | 100 | 230 | 1.500 | 50 | 2.700 | 52 | \$48 |
| HAXIS 300 | 163 | 230 | 2.025 | 50 | 2.550 | 54 | \$54 |
| HAXIS 350 | 240 | 230 | 3.110 | 50 | 2.250 | 58 | \$62 |



HBAF WC Fan

High quality PP materials are used in the production of HBAFs. They can be used in bathroom walls or windows

| | |
|-------------------------------|----------------------------|
| MOTOR INSULATION CLASS | F CLASS |
| MOTOR PROTECTION CLASS | IP 25 |
| MOTOR EFFICIENCY CLASS | IE2 |
| MOTOR ENCLOSURE TYPE | EXTERNAL ROTOR MOTOR |
| MOTOR BRAND | |
| BODY MATERIAL | PP |
| BODY COATING | OPTIONAL |
| IMPELLER MATERIAL | PP |
| DUTY CYCLE | IEC Duty Cycle-S1 |
| WORKING AMBIENT TEMPERATURE | -20 - +50 °C |
| DIRECTIVE | IEC-60335-2-80, ISO 1940-1 |



| Type | Input power | Voltage | Air flow | Frequency | Revolution | Noise level | Price |
|-----------------|-------------|---------|---------------------|-----------|------------|-------------|-------------|
| | (w) | (v) | (m ³ /h) | (Hz) | (rpm) | (dB(A)) | (USD) |
| HBAF 100 | 14 | 230 | 97 | 50 | 2.800 | 35 | \$7 |
| HBAF 125 | 16 | 230 | 183 | 50 | 2.800 | 36 | \$8 |
| HBAF 150 | 16 | 230 | 290 | 50 | 2.800 | 38 | \$12 |



HSEF Silent WC-Fan

High quality ABS materials are used in the production of HSEFs. They can be used in bathroom walls or windows. With a low-noise level they won't be disturbing the occupants.

| | |
|-------------------------------|----------------------------|
| MOTOR INSULATION CLASS | F CLASS |
| MOTOR PROTECTION CLASS | IP 25 |
| MOTOR EFFICIENCY CLASS | IE2 |
| MOTOR ENCLOSURE TYPE | EXTERNAL ROTOR MOTOR |
| MOTOR BRAND | |
| BODY MATERIAL | ABS |
| BODY COATING | OPTIONAL |
| IMPELLER MATERIAL | ABS |
| DUTY CYCLE | IEC Duty Cycle-S1 |
| WORKING AMBIENT TEMPERATURE | -20 - +50 °C |
| DIRECTIVE | IEC-60335-2-80, ISO 1940-1 |



| Type | Input power | Voltage | Air flow | Frequency | Revolution | Noise level | Price |
|-----------------|-------------|---------|---------------------|-----------|------------|-------------|-------------|
| | (w) | (v) | (m ³ /h) | (Hz) | (rpm) | (dB(A)) | (USD) |
| HSEF 100 | 8,4 | 230 | 90 | 50 | 2.800 | 25 | \$28 |
| HSEF 125 | 10 | 230 | 180 | 50 | 2.800 | 30 | \$37 |
| HSEF 150 | 20 | 230 | 320 | 50 | 2.800 | 33 | \$65 |



HDAXIS Axial In-line Duct Fan

HDAXIS fans can be used when low volume required. It is easy to install to walls and windows. Low noise level and power usage makes it an ideal solution for commercial usage.

| | |
|-----------------------------|----------------------------|
| MOTOR INSULATION CLASS | F CLASS |
| MOTOR PROTECTION CLASS | IP 44 |
| MOTOR EFFICIENCY CLASS | - |
| MOTOR ENCLOSURE TYPE | EXTERNAL ROTOR MOTOR |
| MOTOR BRAND | HAVALAN |
| BODY MATERIAL | GALVANIZED SHEET METAL |
| BODY COATING | ELECTROSTATIC POWDER PAINT |
| IMPELLER MATERIAL | GALVANIZED SHEET METAL |
| DUTY CYCLE | IEC Duty Cycle-S1 |
| WORKING AMBIENT TEMPERATURE | -20 - +50 °C |
| DIRECTIVE | IEC-60335-2-80, ISO 1940-1 |



| Type | Input power | Voltage | Air flow | Frequency | Revolution | Noise level | Price |
|------------|-------------|---------|---------------------|-----------|------------|-------------|-------------|
| | (w) | (v) | (m ³ /h) | (Hz) | (rpm) | (dB(A)) | (USD) |
| HDAXIS 200 | 67 | 230 | 680 | 50 | 2.700 | 60 | \$41 |
| HDAXIS 250 | 110 | 230 | 1500 | 50 | 2.640 | 70 | \$48 |
| HDAXIS 300 | 160 | 230 | 2020 | 50 | 2.630 | 72 | \$54 |
| HDAXIS 350 | 240 | 230 | 3110 | 50 | 2.280 | 78 | \$62 |



HCF Axial Cooling Fan

HCF fans can be used to push or pull air for commercial and industrial refrigerators, cold kitchen storage and cold storage. They can be ordered to be blower suction type.

| | |
|-----------------------------|----------------------------|
| MOTOR INSULATION CLASS | F CLASS |
| MOTOR PROTECTION CLASS | IP 44 |
| MOTOR EFFICIENCY CLASS | – |
| MOTOR ENCLOSURE TYPE | AC EXTERNAL ROTOR MOTOR |
| IMPELLER MATERIAL | ALUMINUM-GALVANIZED |
| BODY MATERIAL | STEEL GRILLE |
| BODY COATING | ELECTROSTATIC POWDER PAINT |
| IMPELLER TYPE | AXIAL |
| DUTY CYCLE | IEC Duty Cycle-S1 |
| WORKING AMBIENT TEMPERATURE | -20 - +50 °C |
| DIRECTIVE | IEC-60335-2-80, ISO 1940-1 |



| Type | Input power | Voltage | Air flow | Frequency | Revolution | Noise level | Price |
|-------------------------|-------------|---------|---------------------|-----------|------------|-------------|--------------|
| | (w) | (v) | (m ³ /h) | (Hz) | (rpm) | (dB(A)) | (USD) |
| HCF 250 "S" or "B" TYPE | 50 | 230 | 1,000 | 50 | 1,380 | 89 | \$59 |
| HCF 300 "S" or "B" TYPE | 90 | 230 | 1,700 | 50 | 1,370 | 91 | \$64 |
| HCF 350 "S" or "B" TYPE | 138 | 230 | 2,980 | 50 | 1,370 | 95 | \$111 |
| HCF 400 "S" or "B" TYPE | 180 | 230 | 3,900 | 50 | 1,350 | 96 | \$120 |
| HCF 450 "S" or "B" TYPE | 250 | 230 | 5,100 | 50 | 1,380 | 99 | \$138 |



PTS Circular Inline Silent Bathroom Fan

High quality PP materials are used in the production of PTS's. They can be used in bathroom walls or windows

| | |
|-----------------------------|----------------------------|
| MOTOR INSULATION CLASS | F CLASS |
| MOTOR PROTECTION CLASS | IP 25 |
| MOTOR EFFICIENCY CLASS | IE2 |
| MOTOR ENCLOSURE TYPE | EXTERNAL ROTOR MOTOR |
| MOTOR BRAND | HAVALAN |
| BODY MATERIAL | PP |
| BODY COATING | OPTIONAL |
| IMPELLER MATERIAL | PP |
| DUTY CYCLE | IEC Duty Cycle-S1 |
| WORKING AMBIENT TEMPERATURE | -20 - +50 °C |
| DIRECTIVE | IEC-60335-2-80, ISO 1940-1 |



| Type | Input power | Voltage | Air flow | Frequency | Revolution | Noise level | Price |
|---------|-------------|---------|---------------------|-----------|------------|-------------|-------------|
| | (w) | (v) | (m ³ /h) | (Hz) | (rpm) | (dB(A)) | (USD) |
| PTS 100 | 14 | 230 | 107 | 50 | 2,800 | 35 | \$7 |
| PTS 125 | 18 | 230 | 190 | 50 | 2,800 | 36 | \$8 |
| PTS 150 | 22 | 230 | 300 | 50 | 2,800 | 38 | \$12 |





AXIAL FAN

JET FAN



SMOKE
EXHAUST
FAN



1 AXIAL FANS

Roof Types Fans

Roof Type Smoke Exhaust Fans

Hidden Motor Axial fans

2 SMOKE EXHAUST FANS

Smoke Exhaust Fans

P R O K T E S

ROOF TYPE AXIAL FANLAR



ROOF TYPE AXIAL FAN

They can be used in stair and elevator pressurization.
They serve as ambient ventilation or exhaust.
Production at desired flow rate and pressure
Aluminum or Plastic wing option

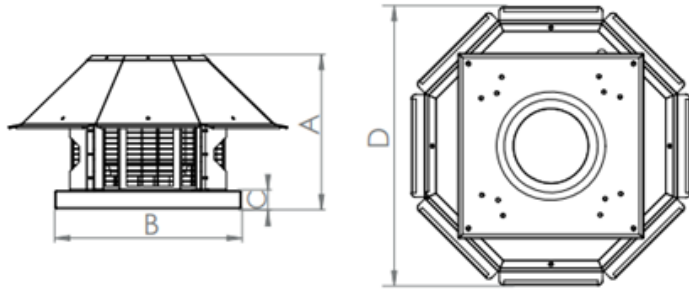


| Type | Input power | Voltage | Air flow | Noise level | width | long | height | Price |
|-----------------|-------------|---------|---------------------|-------------|-------|------|--------|----------------|
| | (kw) | (v) | (m ³ /h) | dB(A) | mm | mm | mm | (USD) |
| HCAXI 400-5-25 | 0.37 | 380 | 3,000 | 66 | 500 | 500 | 800 | \$409 |
| HCAXI 450-5-25 | 0.55 | 380 | 4,400 | 69 | 550 | 550 | 800 | \$429 |
| HCAXI 500-5-25 | 0.55 | 380 | 6,000 | 72 | 600 | 600 | 800 | \$454 |
| HCAXI 560-5-25 | 0.75 | 380 | 8,200 | 75 | 650 | 650 | 800 | \$582 |
| HCAXI 630-5-30 | 1.1 | 380 | 14,000 | 80 | 750 | 750 | 850 | \$652 |
| HCAXI 710-5-30 | 1.5 | 380 | 20,000 | 83 | 850 | 850 | 850 | \$770 |
| HCAXI 800-5-30 | 2.2 | 380 | 26,000 | 85 | 950 | 950 | 850 | \$942 |
| HCAXI 800-5-35 | 3 | 380 | 32,000 | 89 | 950 | 950 | 850 | \$983 |
| HCAXI 900-5-35 | 4 | 380 | 40,000 | 90 | 1050 | 1050 | 1200 | \$1.256 |
| HCAXI 900-5-40 | 5.5 | 380 | 48,000 | 93 | 1050 | 1050 | 1200 | \$1.426 |
| HCAXI 1000-5-40 | 7.5 | 380 | 56,000 | 94 | 1150 | 1150 | 1200 | \$1.594 |
| HCAXI 900-8-40 | 11 | 380 | 49,000 | 94 | 1050 | 1050 | 1200 | \$1.821 |
| HCAXI 1000-8-40 | 15 | 380 | 65,000 | 97 | 1150 | 1150 | 1200 | \$2.260 |
| HCAXI 1000-8-45 | 18.5 | 380 | 73,000 | 99 | 1150 | 1150 | 1200 | \$2.637 |
| HCAXI 1120-8-40 | 22 | 380 | 90,000 | 100 | 1250 | 1250 | 1200 | \$3.803 |
| HCAXI 1120-8-45 | 30 | 380 | 100,000 | 102 | 1250 | 1250 | 1200 | \$4.427 |



Horizontal Discharge Centrifugal Fan With Motor Out Of Air

This fan can be used where the air that it exhausts has particles in it that would damage the motor. Vertical discharge allows it to be used in close quarters with other things like chimneys and fans.



| | |
|-------------------------------|----------------------------|
| MOTOR INSULATION CLASS | F CLASS |
| MOTOR PROTECTION CLASS | IP 55 |
| MOTOR EFFICIENCY CLASS | IE2-IE3 |
| MOTOR ENCLOSURE TYPE | TEFC |
| MOTOR BRAND | GAMAK-VOLT-WATT-ELK |
| BODY MATERIAL | GALVANIZED SHEET METAL |
| BODY COATING | POWDER COATED |
| IMPELLER MATERIAL | GALVANIZED SHEET METAL |
| DUTY CYCLE | IEC Duty Cycle-S1 |
| WORKING TEMPERATURE | -20 - +50 °C |
| STANDARDS | IEC-60335-2-80, ISO 1940-1 |



| Type | Input power | Voltage | Air flow | Noise level | A | B | D | Price |
|-----------------|-------------|---------|---------------------|-------------|-----|------|-----|----------------|
| | (kw) | (v) | (m ³ /h) | dB(A) | mm | mm | mm | (USD) |
| HPCATI 400-5-25 | 0.37 | 380 | 2,850 | 66 | 500 | 800 | 600 | \$519 |
| HPCATI 450-5-25 | 0.55 | 380 | 3,800 | 69 | 550 | 850 | 600 | \$559 |
| HPCATI 500-5-25 | 0.55 | 380 | 4,750 | 72 | 600 | 900 | 630 | \$598 |
| HPCATI 560-5-25 | 0.75 | 380 | 7,125 | 75 | 660 | 960 | 630 | \$684 |
| HPCATI 630-5-30 | 1.1 | 380 | 11,400 | 80 | 730 | 1030 | 700 | \$800 |
| HPCATI 710-5-30 | 1.5 | 380 | 16,150 | 83 | 810 | 1110 | 700 | \$1.017 |
| HPCATI 800-5-30 | 2.2 | 380 | 21,780 | 85 | 900 | 1200 | 750 | \$1.157 |
| HPCATI 800-5-35 | 3 | 380 | 26,600 | 89 | 900 | 1200 | 750 | \$1.328 |



Horizontal Discharge Centrifugal Fan With Motor Out Of Air

HDRAD fans can be used where the air that it exhausts has particles in it that would damage the motor.

| | |
|-----------------------------|----------------------------|
| MOTOR INSULATION CLASS | F CLASS |
| MOTOR PROTECTION CLASS | IP 55 |
| MOTOR EFFICIENCY CLASS | IE2-IE3 |
| MOTOR ENCLOSURE TYPE | HAVALAN |
| MOTOR BRAND | GAMAK-VOLT-WATT-ELK |
| BODY MATERIAL | GALVANIZED SHEET METAL |
| BODY COATING | ELECTROSTATIC POWDER PAINT |
| IMPELLER MATERIAL | GALVANIZED SHEET METAL |
| DUTY CYCLE | IEC Duty Cycle-S1 |
| WORKING AMBIENT TEMPERATURE | -20 - +50 °C |
| DIRECTIVE | IEC-60335-2-80, ISO 1940-1 |



120 °C



| Type | Input power | Voltage | Flow Rate | Noise level | Frequency | Revolution | Price |
|-----------|-------------|---------|---------------------|-------------|-----------|------------|--------------|
| | (kw) | (v) | (m ³ /h) | dB(A) | Hz | rpm | (USD) |
| HDRAD 280 | 0,18 | 380 | 1.100 | 73 | 50 | 1.450 | \$244 |
| HDRAD 315 | 0,25 | 380 | 1.600 | 73 | 50 | 1.469 | \$286 |
| HDRAD 355 | 0,37 | 380 | 2.300 | 75 | 50 | 1.471 | \$312 |
| HDRAD 400 | 0,55 | 380 | 3.300 | 78 | 50 | 1.478 | \$363 |
| HDRAD 450 | 0,75 | 380 | 5.000 | 70 | 50 | 1.454 | \$451 |
| HDRAD 500 | 1,10 | 380 | 7.000 | 83 | 50 | 1.462 | \$549 |
| HDRAD 560 | 1,50 | 380 | 9.800 | 74 | 50 | 1.464 | \$650 |

Roof Mounted Horizontal Discharge Centrifugal Fan

HCRAD fans can be used in low to medium volume projects and can be mounted on the roof. Easy-to-install with long-lasting motor and efficient impeller.

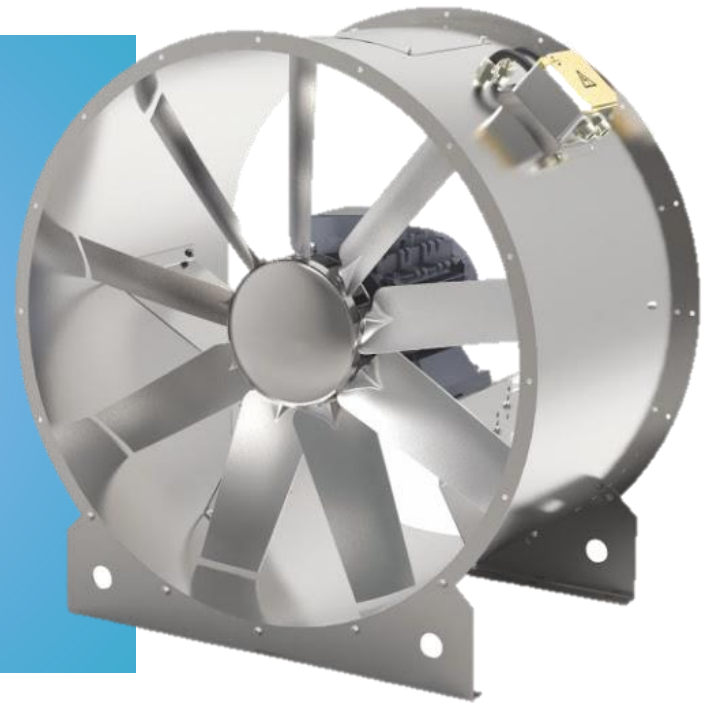
| | |
|-----------------------------|----------------------------|
| MOTOR INSULATION CLASS | F CLASS |
| MOTOR PROTECTION CLASS | IP 44 |
| MOTOR EFFICIENCY CLASS | IE2-IE3 |
| MOTOR ENCLOSURE TYPE | EXTERNAL ROTOR MOTOR |
| MOTOR BRAND | HAVALAN |
| BODY MATERIAL | GALVANIZED SHEET METAL |
| BODY COATING | ELECTROSTATIC POWDER PAINT |
| IMPELLER MATERIAL | GALVANIZED SHEET METAL |
| DUTY CYCLE | IEC Duty Cycle-S1 |
| WORKING AMBIENT TEMPERATURE | -20 - +50 °C |
| DIRECTIVE | IEC-60335-2-80, ISO 1940-1 |



| Type | Input power | Voltage | Flow Rate | Noise level | Frequency | Revolution | Price |
|-----------|-------------|------------|---------------------|-------------|-----------|------------|--------------|
| | (W) | (v) | (m ³ /h) | dB(A) | Hz | rpm | (USD) |
| HCRAD 190 | 90 | 230 | 520 | 70 | 50 | 2.600 | \$84 |
| HCRAD 225 | 104 | 230 | 950 | 73 | 50 | 2.675 | \$106 |
| HCRAD 250 | 130 | 230 | 1.150 | 75 | 50 | 2.685 | \$115 |
| HCRAD 280 | 180 | 230 | 2.000 | 78 | 50 | 2.615 | \$167 |
| HCRAD 355 | 147 | 230 | 2.350 | 70 | 50 | 1.365 | \$263 |
| HCRAD 400 | 380 | 230 | 3.400 | 83 | 50 | 1.365 | \$346 |
| HCRAD 450 | 690 | 230 | 5.000 | 83 | 50 | 1.365 | \$435 |
| HCRAD 500 | 1.080 | 230 or 380 | 7.000 | 86 | 50 | 1.365 | \$597 |
| HCRAD 560 | 1.670 | 380 | 9.300 | 86 | 50 | 1.365 | \$719 |

P R O K T E S

SMOKE
EXHAUST FAN



Axial Pressurization Fan

HAXI Axial Pressurization Fans are used in staircases, elevator shafts and other needs for pressurization. It can be used in high volume-low pressure systems

| | |
|-----------------------------|----------------------------|
| MOTOR INSULATION CLASS | F CLASS |
| MOTOR PROTECTION CLASS | IP 55 |
| MOTOR EFFICIENCY CLASS | IE2-IE3 |
| MOTOR ENCLOSURE TYPE | TEFC |
| MOTOR BRAND | GAMAK-VOLT-WATT-ELK |
| BODY MATERIAL | GALVANIZED SHEET METAL |
| BODY COATING | OPTIONAL |
| IMPELLER MATERIAL | ALUMINIUM |
| DUTY CYCLE | IEC Duty Cycle-S1 |
| WORKING AMBIENT TEMPERATURE | -20 - +50 °C |
| DIRECTIVE | IEC-60335-2-80, ISO 1940-1 |



| Type | Input power (kw) | Voltage (v) | Air flow (m ³ /h) | Noise level dB(A) | inner diameter mm | External diameter mm | width mm | Price (USD) |
|----------------|---------------------|----------------|---------------------------------|----------------------|----------------------|-------------------------|-------------|----------------|
| HAXI 400-5-25 | 0.37 | 380 | 3,000 | 66 | 400 | 480 | 320 | \$317 |
| HAXI 450-5-25 | 0.55 | 380 | 4,400 | 69 | 450 | 530 | 320 | \$350 |
| HAXI 500-5-25 | 0.55 | 380 | 6,000 | 72 | 500 | 580 | 320 | \$356 |
| HAXI 560-5-25 | 0.75 | 380 | 8,200 | 75 | 560 | 640 | 320 | \$434 |
| HAXI 630-5-30 | 1.1 | 380 | 14,000 | 80 | 630 | 710 | 420 | \$474 |
| HAXI 710-5-30 | 1.5 | 380 | 20,000 | 83 | 710 | 790 | 420 | \$660 |
| HAXI 800-5-30 | 2.2 | 380 | 26,000 | 85 | 800 | 880 | 420 | \$727 |
| HAXI 800-5-35 | 3 | 380 | 32,000 | 89 | 800 | 880 | 420 | \$855 |
| HAXI 900-5-35 | 4 | 380 | 40,000 | 90 | 900 | 980 | 520 | \$1.021 |
| HAXI 900-5-40 | 5.5 | 380 | 48,000 | 93 | 900 | 980 | 520 | \$1.170 |
| HAXI 1000-5-40 | 7.5 | 380 | 56,000 | 94 | 1000 | 1080 | 520 | \$1.679 |
| HAXI 900-8-40 | 11 | 380 | 49,000 | 94 | 900 | 980 | 520 | \$1.982 |
| HAXI 1000-8-40 | 15 | 380 | 65,000 | 97 | 1000 | 1080 | 520 | \$2.250 |
| HAXI 1000-8-45 | 18.5 | 380 | 73,000 | 99 | 1000 | 1080 | 520 | \$2.815 |
| HAXI 1120-8-40 | 22 | 380 | 90,000 | 100 | 1120 | 1200 | 520 | \$3.342 |



OPTIONS



| GRILLE GUARD | |
|--------------|-------|
| SIZE | PRICE |
| 400 | \$37 |
| 450 | \$37 |
| 500 | \$45 |
| 560 | \$47 |
| 630 | \$54 |
| 710 | \$72 |
| 800 | \$91 |
| 900 | \$114 |
| 1000 | \$171 |
| 1120 | \$197 |

| SUPPORT FEET | |
|--------------|-------|
| SIZE | PRICE |
| 400 | \$33 |
| 450 | \$37 |
| 500 | \$40 |
| 560 | \$45 |
| 630 | \$52 |
| 710 | \$66 |
| 800 | \$83 |
| 900 | \$102 |
| 1000 | \$153 |
| 1120 | \$178 |

| DUCT FLANGE | |
|-------------|-------|
| SIZE | PRICE |
| 400 | \$59 |
| 450 | \$63 |
| 500 | \$70 |
| 560 | \$76 |
| 630 | \$83 |
| 710 | \$95 |
| 800 | \$113 |
| 900 | \$120 |
| 1000 | \$129 |
| 1120 | \$150 |

| CONNECTOR | |
|-----------|-------|
| SIZE | PRICE |
| 400 | \$130 |
| 450 | \$142 |
| 500 | \$157 |
| 560 | \$171 |
| 630 | \$190 |
| 710 | \$216 |
| 800 | \$250 |
| 900 | \$268 |
| 1000 | \$299 |
| 1120 | \$337 |

| RUBBER PAD | |
|------------|-------|
| SIZE | PRICE |
| 400 | \$58 |
| 450 | \$58 |
| 500 | \$58 |
| 560 | \$58 |
| 630 | \$58 |
| 710 | \$77 |
| 800 | \$77 |
| 900 | \$77 |
| 1000 | \$77 |
| 1120 | \$77 |

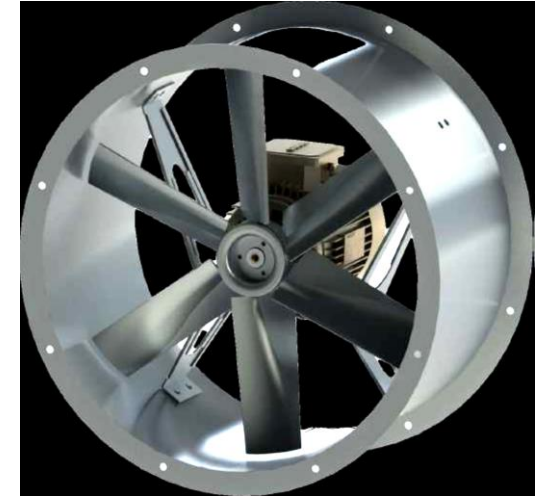
| SPRING | |
|--------|-------|
| SIZE | PRICE |
| 400 | \$149 |
| 450 | \$149 |
| 500 | \$149 |
| 560 | \$149 |
| 630 | \$149 |
| 710 | \$202 |
| 800 | \$202 |
| 900 | \$202 |
| 1000 | \$202 |
| 1120 | \$202 |

- 5, 8, 12, or 16 Blade Fan
- System Automation
- Two-Speed Motor

Axial Pressurization Fan 2P High REV.

HAXI Axial Pressurization Fans are used in staircases, elevator shafts and other needs for pressurization. It can be used in high volume-low pressure systems

| | |
|-----------------------------|----------------------------|
| MOTOR INSULATION CLASS | F CLASS |
| MOTOR PROTECTION CLASS | IP 55 |
| MOTOR EFFICIENCY CLASS | IE3 |
| MOTOR ENCLOSURE TYPE | TEFC |
| MOTOR BRAND | GAMAK-VOLT-WATT-ELK |
| BODY MATERIAL | GALVANIZED SHEET METAL |
| BODY COATING | OPTIONAL |
| IMPELLER MATERIAL | ALUMINIUM |
| DUTY CYCLE | IEC Duty Cycle-S1 |
| WORKING AMBIENT TEMPERATURE | -20 - +50 °C |
| DIRECTIVE | IEC-60335-2-80, ISO 1940-1 |



| Type | Input power | Voltage | Air flow | Noise level | inner diameter | REV. | Price |
|----------------|-------------|---------|---------------------|-------------|----------------|------|----------------|
| | (kw) | (v) | (m ³ /h) | dB(A) | mm | RPM | (USD) |
| HAXII 315-6-45 | 0,75 | 380 | 4.670 | 63 | 315 | 2880 | \$330 |
| HAXII 355-6-45 | 1,1 | 380 | 6.770 | 65 | 355 | 2880 | \$349 |
| HAXII 400-6-45 | 2,2 | 380 | 9.701 | 67 | 400 | 2880 | \$466 |
| HAXII 450-6-45 | 3 | 380 | 13.500 | 69 | 450 | 2880 | \$549 |
| HAXII 500-6-45 | 4 | 380 | 17.900 | 72 | 500 | 2880 | \$672 |
| HAXII 560-6-45 | 5,5 | 380 | 24.000 | 75 | 560 | 2880 | \$902 |
| HAXII 630-6-45 | 11 | 380 | 32.800 | 80 | 630 | 2880 | \$1.467 |



BELT DRIVEN AXIAL FAN

Belt driven axial fans can be used when the motor should be out of the airstream. With its belt drive system clients can choose the revolution at the order.

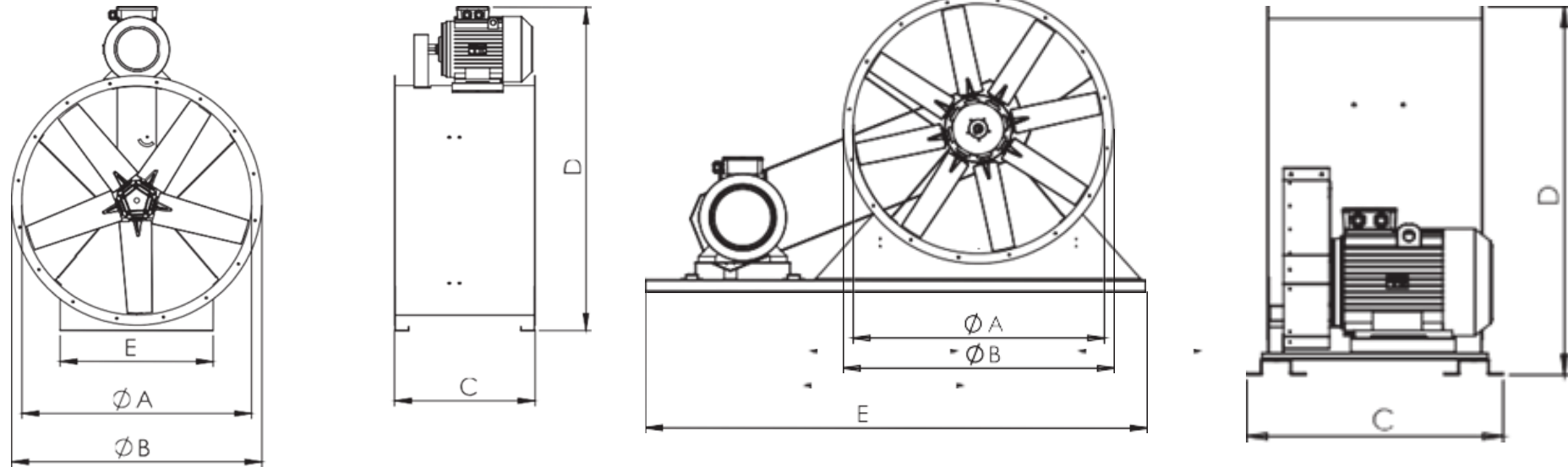
It comes with mounting feet as standard.

| | |
|------------------------|------------------------|
| MOTOR PROTECTION CLASS | IP 55 |
| MOTOR INSULATION CLASS | F CLASS |
| MOTOR EFFICIENCY CLASS | IE2-IE3 |
| MOTOR BRAND | GAMAK-VOLT-WAT |
| MOTOR ENCLOSURE TYPE | TEFC |
| BODY MATERIAL | GALVANIZED SHEET METAL |
| BODY COATING | OPTIONAL |
| IMPELLER TYPE | AXIAL |
| IMPELLER MATERIAL | ALIMINIUM SHEET METAL |
| DUTY CYCLE | IEC Duty Cycle-S1 |
| WORKING AMBIENT TEMP | -20 - +50 °C |

| TYPE | VOLTAGE (V) | FREQUENCY (Hz) | POWER (KW) | REV. (RPM) | FLOW RATE (m3/h) | SOUND PRESSURE dB(A) 3m | Price (USD) |
|-------------------|-------------|----------------|------------|------------|------------------|-------------------------|----------------|
| HASEF-D 400-5-25 | 380 | 50 | 0,37 | 1.450 | 2.895 | 66 | \$606 |
| HASEF-D 450-5-25 | 380 | 50 | 0,55 | 1.456 | 4.180 | 69 | \$679 |
| HASEF-D 500-5-25 | 380 | 50 | 0,55 | 1.453 | 5.845 | 72 | \$715 |
| HASEF-D 560-5-25 | 380 | 50 | 0,75 | 1.466 | 8.150 | 75 | \$830 |
| HASEF-D 630-5-30 | 380 | 50 | 1,10 | 1.465 | 13.480 | 80 | \$936 |
| HASEF-D 710-5-30 | 380 | 50 | 1,50 | 1.472 | 19.210 | 83 | \$1.060 |
| HASEF-D 800-5-30 | 380 | 50 | 2,20 | 1.459 | 25.560 | 85 | \$1.171 |
| HASEF-D 800-5-35 | 380 | 50 | 3,00 | 1.463 | 30.940 | 89 | \$1.282 |
| HASEF-D 900-5-35 | 380 | 50 | 4,00 | 1.471 | 39.250 | 90 | \$1.468 |
| HASEF-D 900-5-40 | 380 | 50 | 5,50 | 1.472 | 44.635 | 93 | \$1.645 |
| HASEF-D 1000-5-40 | 380 | 50 | 7,50 | 1.478 | 54.570 | 94 | \$1.831 |
| HASEF-D 900-8-40 | 380 | 50 | 11,00 | 1.454 | 46.200 | 94 | \$2.323 |
| HASEF-D 1000-8-40 | 380 | 50 | 15,00 | 1.456 | 62.250 | 97 | \$2.700 |
| HASEF-D 1000-8-45 | 380 | 50 | 18,50 | 1.458 | 69.070 | 99 | \$2.951 |
| HASEF-D 1120-8-40 | 380 | 50 | 22,00 | 1.471 | 86.620 | 100 | \$3.651 |
| HASEF-D 1120-8-45 | 380 | 50 | 30,00 | 1.474 | 95.270 | 102 | \$4.483 |



DRAWING



| MODEL | A (mm) | B (mm) | C (mm) | D (mm) | E (mm) |
|--------------|--------|--------|--------|--------|--------|
| HASEF-D 400 | 400 | 480 | 380 | 660 | 300 |
| HASEF-D 450 | 450 | 530 | 400 | 720 | 330 |
| HASEF-D 500 | 500 | 580 | 400 | 770 | 360 |
| HASEF-D 560 | 560 | 640 | 430 | 840 | 400 |
| HASEF-D 630 | 630 | 710 | 500 | 925 | 440 |
| HASEF-D 710 | 710 | 790 | 500 | 1005 | 480 |
| HASEF-D 800 | 800 | 880 | 500 | 1110 | 520 |
| HASEF-D 900 | 900 | 980 | 740 | 1360 | 560 |
| HASEF-D 1000 | 1000 | 1080 | 740 | 1470 | 600 |
| HASEF-D 1120 | 1120 | 1200 | 520 | 11 | 16 |

BIFURCATED AXIAL FAN

Bifurcated axial fans can be used when motor should be out of the airstream but a belt driven model cannot be used. When continuous use required in high temperature motor can be cooled by attaching a KAS fan.

| | |
|-----------------------------|-----------------------------|
| MOTOR INSULATION CLASS | H CLASS |
| MOTOR PROTECTION CLASS | IP 54-IP 55 |
| MOTOR EFFICIENCY CLASS | IE1-IE2 |
| MOTOR ENCLOSURE TYPE | TEAO |
| MOTOR BRAND | WEG |
| BODY MATERIAL | GALVANIZED SHEET METAL |
| BODY COATING | OPTIONAL |
| IMPELLER MATERIAL | ALUMINIUM |
| DUTY CYCLE | IEC Duty Cycle-S1 |
| WORKING AMBIENT TEMPERATURE | -20 - +50 °C |
| DIRECTIVE | IEC-60335-2-80, ISO 1940-1, |



| Type | Input power (kw) | Voltage (v) | Air flow (m ³ /h) | Noise level dB(A) | Frequency (Hz) | REV rpm | Price (USD) |
|------------------|------------------|-------------|------------------------------|-------------------|----------------|---------|----------------|
| KSEF-B 710-5-30 | 1.5 | 380 | 17,000 | 83 | 50 | 1.450 | \$883 |
| KSEF-B 800-5-30 | 2.2 | 380 | 22,250 | 85 | 50 | 1.456 | \$1.014 |
| KSEF-B 800-5-35 | 3 | 380 | 26,940 | 89 | 50 | 1.453 | \$1.118 |
| KSEF-B 900-5-35 | 4 | 380 | 34,150 | 90 | 50 | 1.466 | \$1.198 |
| KSEF-B 900-5-40 | 5.5 | 380 | 40,000 | 93 | 50 | 1.465 | \$1.570 |
| KSEF-B 1000-5-40 | 7.5 | 380 | 49,570 | 94 | 50 | 1.472 | \$1.746 |
| KSEF-B 900-8-45 | 11 | 380 | 43,200 | 94 | 50 | 1.459 | \$2.644 |
| KSEF-B 1000-8-40 | 15 | 380 | 58,850 | 97 | 50 | 1.463 | \$2.876 |
| KSEF-B 1000-8-45 | 18 | 380 | 66,070 | 99 | 50 | 1.471 | \$3.328 |
| KSEF-B 1120-8-40 | 22 | 380 | 84,620 | 100 | 50 | 1.472 | \$3.956 |
| KSEF-B 1120-8-45 | 30 | 380 | 92,270 | 102 | 50 | 1.478 | \$4.992 |



WALL MOUNTED EXHAUST FAN

Fan blades are made of stainless steel. Maximum blade efficiency and special inclined blade design, Maximum energy saving.

Automatically opening the shutter on the front panel, special design protection wire on the rear panel

Usage areas; It is used for all closed areas with ventilation problems, ventilation, and cooling of poultry farms, ventilation and cooling of cattle barns, ventilation and cooling of greenhouses, factory, workshop, and similar places to clean gas, smoke, dust, bad odor, etc.



| Type | Maximum Air flow (m ³ /h) | Power (kw) | Voltage (v) | Nominal propeller speed rpm | Propeller diameter mm(Inch) | Price (USD) |
|----------|---|---------------|----------------|--------------------------------|--------------------------------|----------------|
| PTAV 100 | 20,500 | 0.37 | 380/50H | 610 | 915(30) | \$345 |
| PTAV 140 | 40,500 | 1.1 | 380/50H | 439 | 1235(36) | \$390 |



WALL MOUNTED EXHAUST FAN

The casing is made of electrostatic powder-coated sheet metal
 impeller is made of plastic
 Uses: Factories stock depots dye houses shopping centers big
 halls etc.

speed can be adjusted using an optional controller

| | |
|--------------------------------|---------------------------|
| MOTOR INSULATION CLASS | F CLASS |
| MOTOR PROTECTION CLASS | IP 55 |
| ENGINE EFFICIENCY CLASS | IE 3- IE 2 |
| ENGINE TYPE | TEFC |
| MOTOR BRAND | GAMAK-VOLT-WATT |
| BODY MATERIAL | GALVANIZED SHEET |
| BODY COATING | ELECTROSTATIC COLOUR |
| IMPELLER MATERIAL | METAL-PLASTIC |
| DUTY CYCLE | IEC DUTY CYCLE-S1 |
| OPERATING TEMPERATURE | -20 - + 50 °C |
| STANDARDS | IEC-60335-2-80,ISO 1940-1 |



| Type | Voltage (v) | Frequency (HZ) | Input Power (kw) | Speed (rpm) | Air flow (m ³ /h) | Noise level (dB) | Price (USD) |
|-----------------|-------------|----------------|------------------|-------------|------------------------------|------------------|----------------|
| HAXIP 400-5-25 | 380 | 50 | 0.37 | 1450 | 2,950 | 66 | \$301 |
| HAXIP 450-5-25 | 380 | 50 | 0.55 | 1456 | 4,250 | 69 | \$337 |
| HAXIP 500-5-25 | 380 | 50 | 0.55 | 1453 | 6,000 | 72 | \$349 |
| HAXIP 560-5-25 | 380 | 50 | 0.75 | 1466 | 8,200 | 75 | \$413 |
| HAXIP 630-5-30 | 380 | 50 | 1.1 | 1465 | 13,600 | 80 | \$482 |
| HAXIP 710-5-30 | 380 | 50 | 1.5 | 1472 | 19,400 | 83 | \$554 |
| HAXIP 800-5-30 | 380 | 50 | 2.2 | 1459 | 26,000 | 85 | \$648 |
| HAXIP 800-5-35 | 380 | 50 | 3 | 1463 | 30,950 | 89 | \$719 |
| HAXIP 900-5-35 | 380 | 50 | 4 | 1471 | 40,000 | 90 | \$874 |
| HAXIP 900-5-40 | 380 | 50 | 5.5 | 1472 | 45,500 | 93 | \$1.014 |
| HAXIP 1000-5-40 | 380 | 50 | 7.5 | 1478 | 55,000 | 94 | \$1.167 |





AIRFOIL



BACKWARD CURVED



BACKWARD INCLINED



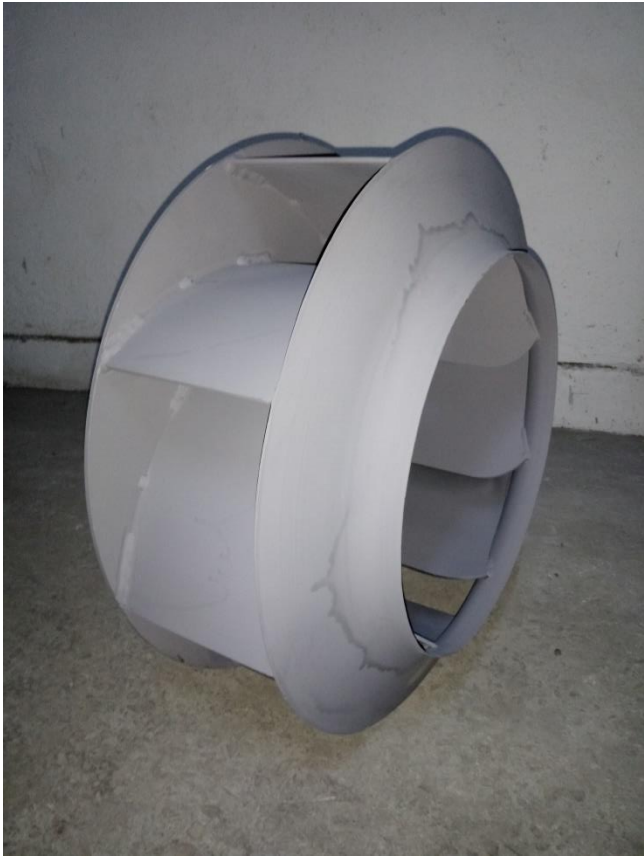
hayAlan



FAN IMPELLERS

| MODEL | Unit | | Price (USD) |
|---------------|------|-----|-------------|
| 250 Impeller | 1 | PCS | \$185 |
| 280 Impeller | 1 | PCS | \$185 |
| 315 Impeller | 1 | PCS | \$192 |
| 355 Impeller | 1 | PCS | \$197 |
| 400 Impeller | 1 | PCS | \$214 |
| 450 Impeller | 1 | PCS | \$260 |
| 500 Impeller | 1 | PCS | \$275 |
| 560 Impeller | 1 | PCS | \$350 |
| 630 Impeller | 1 | PCS | \$460 |
| 710 Impeller | 1 | PCS | \$540 |
| 800 Impeller | 1 | PCS | \$650 |
| 1000 Impeller | 1 | PCS | \$824 |

hayAlan



PLASTIC BLADE IMPELLERS

| Model | Diameter (mm) | Blade | Hub Diameter (Ø) | Price (USD) |
|-----------|---------------|-------|------------------|-------------|
| HPI-250 | Ø250 | 6 | 14 | 22 |
| HPI-300 | Ø300 | 6 | 14 | 22 |
| HPI-350 | Ø350 | 6 | 14 | 22 |
| HPI-400 | Ø400 | 6 | 14 | 27 |
| HPI-450 | Ø450 | 6 | 14 | 27 |
| HPI-500-1 | Ø500 | 6 | 14 | 36 |
| HPI-500-2 | Ø500 | 5 | 19 | 38 |
| HPI-550 | Ø550 | 5 | 19 | 40 |
| HPI-600 | Ø600 | 5 | 19 | 40 |
| HPI-650 | Ø650 | 5 | 24 | 45 |
| HPI-700 | Ø700 | 5 | 24 | 45 |
| HPI-750 | Ø750 | 5 | 24 | 50 |
| HPI-800 | Ø800 | 5 | 28 | 50 |
| HPI-900 | Ø900 | 5 | 28 | 55 |
| HPI-1000 | Ø1000 | 5 | 38 | 55 |
| HPI-1100 | Ø1100 | 5 | 38 | 62 |
| HPI-1200 | Ø1200 | 5 | 38 | 66 |



ALUMINIUM BLADE IMPELLERS

| Model | Diameter (mm) | Blade | Hub Diameter (∅) | Price (USD) |
|-----------|---------------|-------|------------------|-------------|
| HMI-250 | ∅250 | 6 | 14 | 32 |
| HMI-300 | ∅300 | 6 | 14 | 32 |
| HMI-350 | ∅350 | 6 | 14 | 36 |
| HMI-400 | ∅400 | 6 | 19 | 40 |
| HMI-450 | ∅450 | 6 | 19 | 48 |
| HMI-500 | ∅500 | 6 | 19 | 52 |
| HMI-550 | ∅550 | 6 | 24 | 56 |
| HMI-600-1 | ∅600 | 6 | 24 | 60 |
| HMI-600-2 | ∅600 | 5 | 28 | 109 |
| HMI-650 | ∅650 | 5 | 28 | 113 |
| HMI-700 | ∅700 | 5 | 28 | 119 |
| HMI-750 | ∅750 | 5 | 28 | 134 |
| HMI-800 | ∅800 | 5 | 38 | 142 |
| HMI-900 | ∅900 | 5 | 38 | 149 |
| HMI-1000 | ∅1000 | 5 | 42 | 172 |
| HMI-1120 | ∅1120 | 5 | 42 | 188 |
| HMI-1220 | ∅1220 | 5 | 42 | 205 |
| HMI-1250 | ∅1250 | 9 | 48-60 | 495 |



4-BLADES METAL IMPELLERS

| Model | Diameter (mm) | Blade | Hub Diameter (Ø) | Price (USD) |
|-----------|---------------|-------|------------------|-------------|
| HP4I-300 | Ø300 | 4 | 14 | 35 |
| HP4I-350 | Ø350 | 4 | 14 | 41 |
| HP4I-400 | Ø400 | 4 | 14 | 47 |
| HP4I-450 | Ø450 | 4 | 14 | 54 |
| HP4I-500 | Ø500 | 4 | 19 | 59 |
| HP4I-550 | Ø550 | 4 | 19 | 64 |
| HP4I-600 | Ø600 | 4 | 24 | 70 |
| HP4I-650 | Ø650 | 4 | 24 | 94 |
| HP4I-700 | Ø700 | 4 | 28 | 128 |
| HP4I-750 | Ø750 | 4 | 28 | 159 |
| HP4I-800 | Ø800 | 4 | 28 | 206 |
| HP4I-900 | Ø900 | 4 | 38 | 230 |
| HP4I-1000 | Ø1000 | 4 | 38 | 295 |
| HP4I-1120 | Ø1120 | 4 | 38 | 347 |
| HP4I-1250 | Ø1250 | 4 | 38 | 387 |



CEILING DIFFUSER

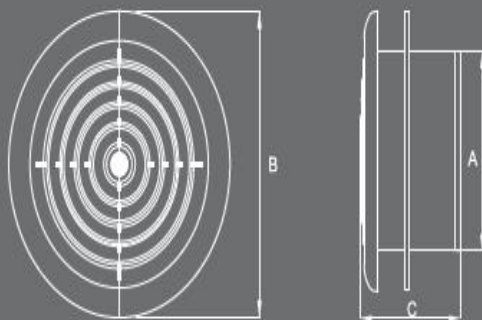


- Economical high performance diffuser
- Providing on architecturally pleasing ceiling affect
- Excellent design for surface mounting applications
- Multilayer cone can divide the air into many layers of swift puffs
- Smoothly balances the flow and temperature of the air
- Manufactured from ABS plastic
- Easy and practical montage
- Easy maintenance

MODEL

| MODEL | NOMINAL SIZE | DIMENSIONS (mm) | | |
|------------|--------------|-----------------|-----|----|
| | | Ø A | Ø B | C |
| CONAIR 031 | Ø 100 | Ø 100 | 141 | 70 |
| CONAIR 032 | Ø 125 | Ø 124 | 166 | 71 |
| CONAIR 033 | Ø 150 | Ø 150 | 188 | 73 |

DIMENSIONS (mm)

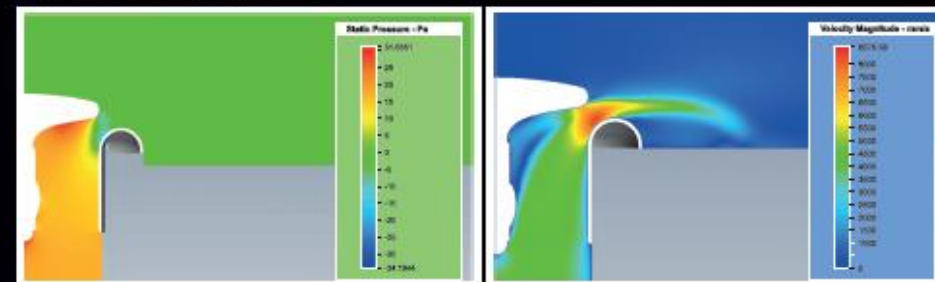


P SMART AIR DISC VALVES

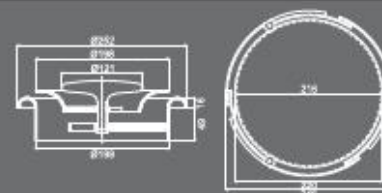


- Mounting in 1 minute: Intellectual design enabling easy and quick mounting on the wall and ceiling
- Energy Saver: Optimum aerodynamic design ensuring very low pressure loss for supply and exhaust
- Recyclable: It is made from ABS plastic entirely
- Aesthetic compatibility with indoor ambience. Resistant to external impacts and having aesthetic appearance
- Contributing to have better indoor air quality and highly efficiency in use. Integrated design eliminating air leakages

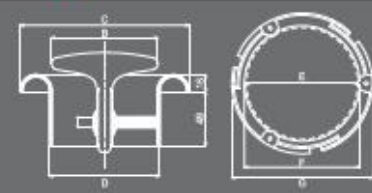
CFD SIMULATION IMAGES



Ø200 DIMENSIONS (mm)



DIMENSIONS (mm)



| P SMART | NOMINAL SIZE | DIMENSIONS (mm) | | | | | |
|---------|--------------|-----------------|-----|-----|-----|-----|-----|
| | | Ø B | Ø C | Ø D | Ø E | Ø F | Ø G |
| | Ø 100 | 96 | 152 | 99 | 116 | 120 | 146 |
| | Ø 125 | 121 | 177 | 124 | 141 | 145 | 171 |
| | Ø 150 | 146 | 202 | 149 | 166 | 170 | 196 |
| | Ø 200 | 121 | 252 | 199 | 216 | 220 | 246 |



certificates





ATTESTATION

of product conformity
Certificate NO: 2024-PTC-5537



PTC Technical Inspection and Certification
ATTESTATION OF COMPLIANCE
(UYGUNLUK ONAYI)

The technical file and test results of the following product have been checked and found in compliance with the Parliament and council Directive 2006/42/EC Machinery Directive.

Teknik dosya ve test raporları incelenerek, belirtilen ürünün Avrupa Birliği Teknik Komisyonu tarafından yayınlanan 2006/42/AT Makina Emniyeti Yönetmeliğine uygunluğu saptanmıştır.

Manufacturer(Üretici) : PROKTES PROJE KONSTUKSİYON TESİSAT DOĞAL GAZ İNŞAAT SAN. VE TİC. LTD. ŞTİ.
Saraylar Mahallesi 1.Sanayi Sitesi 155 Sokak No: 23 Merkez / DENİZLİ

Applicant(Başvuru Sahibi) : PROKTES PROJE KONSTUKSİYON TESİSAT DOĞAL GAZ İNŞAAT SAN. VE TİC. LTD. ŞTİ.
Saraylar Mahallesi 1.Sanayi Sitesi 155 Sokak No: 23 Merkez / DENİZLİ

Product(Ürün) : SALLYANGOZ FAN GRUBU / CENTRIFUGAL FAN GROUP

Trademark(Marka) : PROKTES

Type / Model(Tip Model) : HÜCRELİ ASPIRATÖR GRUBU ; KARE KANAL TİPİ FAN GRUBU ; YUVARLAK KANAL TİPİ FAN GRUBU ; YATAY VE DİKEY ÇATI FANI GRUBU ; DUMAN TAHLİYE FANI GRUBU ; SİĞINA SANTRALİ GRUBU ; MERDİVEN BASINÇ FANI GRUBU

Base Of Attestation(Onay Dayanağı) : TS EN 60204-1 ; EN ISO 12100 ; EN ISO 13849-1 ; EN ISO 13850 ; EN ISO 13857



Sertifika, belirtilen ürünün/ürünlerin test edilmesinden ve / veya teknik dokümantasyonun denetlenmesinden sonra verilir ve test edilen ürünün, belirtilen direktiflerin zorunlu koruma şartlarına gönüllü olarak uygun olduğunu onaylar.

The certificate is issued after testing of the named product/s and/or audit of the technical documentation and confirms that the tested product complies with the essential protection requirements of the mentioned directives on a voluntary basis.

Diğer ilgili standartlara ve direktiflere uyulmalıdır. Bu onay üreticinin uygunluk beyanı düzenleme zorunluluğunu ortadan kaldırmaz. Referans teknik dosya ile ürünün yukarıda belirtilen AT Direktiflerinin temel gereklerine uygunluğu kabul edilir.

The referred technical file(s) shows that the product complies with standard(s) recognized as giving presumption of compliance with the essential requirements listed EU Directive(s) above, other relevant Directives and standards have to be observed. This attestation does not abrogate the compulsory obligation of the manufacturer to issue the declaration of conformity

Date /Tarih : 19/11/2024

PTC Ürün Test ve Belgelendirme San.Tic.Ltd.Şti

Issue Date / Basım Tarihi : 19/11/2024

Expiry to /-e Kadar Geçerli : 19/11/2025

PTC
Ürün Test ve Belgelendirme
San.Tic.Ltd.Şti

Örnek Mah. Udi Hasanbey Sok. No: 31
Reis Plaza Ataşehir / İSTANBUL
Tel: +0(216) 393 32 32
info@ptctesting.com - www.ptctesting.com



Inspecco CERTIFICATE

This is to certify that the Management System of

**PROKTES PROJE KONSTUKSİYON TESİSAT
DOĞAL GAZ İNŞAAT SAN. VE TİC. LTD. ŞTİ.**

Saraylar Mahallesi 1. Sanayi Sitesi 155 Sokak No:23 Merkezefendi / Denizli
has been assessed and approved by Inspecco Certification and Inspection Services
INC. against the following standard

ISO 45001:2018

The Occupational Health and Safety Management System is applicable to
**PROJECT DESIGN, PRODUCTION, SALES AND AFTER-
SALES TECHNICAL SERVICES OF INDUSTRIAL AND
INDUSTRIAL VENTILATION MACHINES AND FANS**

(Exclusions: ...)

Certificate No:
Certificate is valid from/till:
Certificate issue date/ location:
Certificate first issue date:
Certificate loop No:

INS.SB-1000-091/REVO
17.09.2024 / 29.06.2025
17.09.2024, İstanbul
30.06.2023
01



General Manager

This certificate is renewed annually and completing 3 years cycle if compliance with the INSPECCO certification requirements and successful surveillance audit at least once a year.

I-B-F-20 R06, 18.02.2024



Inspecco

Belgelendirme ve Gözetim Hizmetleri A.Ş.
SERİHALI MAH. AKIYÖZ SOK. NO:2/3 İNŞECCO PLAZA, OMRANIYE / İSTANBUL - TÜRKİYE
+90 216 313 14 20

info@inspecco.com
www.inspecco.com

WE BUILD TRUST

Inspecco CERTIFICATE

This is to certify that the Quality Management System of
**PROKTES PROJE KONSTUKSİYON TESİSAT
DOĞAL GAZ İNŞAAT SAN. VE TİC. LTD. ŞTİ.**

Saraylar Mahallesi 1. Sanayi Sitesi 155 Sokak No:23 Merkezefendi / Denizli

has been assessed and approved by Inspecco Certification and Inspection Services
INC. against the following standard

ISO 9001:2015

The Quality Management System is applicable to

**PROJECT DESIGN, PRODUCTION, SALES AND AFTER-
SALES TECHNICAL SERVICES OF INDUSTRIAL AND
INDUSTRIAL VENTILATION MACHINES AND FANS**

(Exclusions: ...)

| | |
|--|------------------------|
| Certificate No: | INS.SB-100-354/REV0 |
| Certificate is valid from/till: | 26.07.2024/ 29.06.2025 |
| Certificate issue date/ location: | 26.07.2024, İstanbul |
| Certificate first issue date: | 30.06.2023 |
| Certificate loop No: | 01 |
| EA Code: | 18 |

General Manager



This certificate is renewed annually and completing 3 years cycle if compliance with the INSPECCO certification requirements and successful surveillance audit at least once a year.

I-B-F-20 R06, 18.02.2024



Inspecco

Belgelendirme ve Gözetim Hizmetleri A.Ş.

SİRİPAI E MAH. ACIKÖYÜZ SOK. No:2/3 INSPECCO PLAZA, ÜMRANİYE / İSTANBUL - TÜRKİYE
+ 90 216 313 14 20

info@inspecco.com
www.inspecco.com

WE BUILD TRUST

Inspecco CERTIFICATE

This is to certify that the Environmental Management System of
**PROKTES PROJE KONSTUKSİYON TESİSAT
DOĞAL GAZ İNŞAAT SAN. VE TİC. LTD. ŞTİ.**

Saraylar Mahallesi 1. Sanayi Sitesi 155 Sokak No:23 Merkezefendi / Denizli

has been assessed and approved by INSPECCO Zertifizierungs- und
Inspektionsdienste GmbH against the following standard

ISO 14001:2015

The Environmental Management System is applicable to

**PROJECT DESIGN, PRODUCTION, SALES AND AFTER-
SALES TECHNICAL SERVICES OF INDUSTRIAL AND
INDUSTRIAL VENTILATION MACHINES AND FANS**

(Exclusions: ...)

| | |
|--|-------------------------|
| Certificate No: | INS.SB-400-124/REV0 |
| Certificate is valid from/till: | 17.09.2024 / 29.06.2025 |
| Certificate issue date/ location: | 17.09.2024, İstanbul |
| Certificate first issue date: | 30.06.2023 |
| Certificate loop No: | 01 |
| EA Code: | 18 |

General Manager



ACCREDITED
Management Systems
Certification Body
MSCB - 117
ISO 14001:2015

This certificate is renewed annually and completing 3 years cycle if compliance with the INSPECCO certification requirements and successful surveillance audit at least once a year.

I-B-F-20 R06, 18.02.2024



Inspecco

INSPECCO Zertifizierungs- und Inspektionsdienste GmbH

Bismarckstr. 13 D-68723
Plankstadt / Germany
Phone: +49 06202 9548657

info@inspecco.com
www.inspecco.com

WE BUILD TRUST



T.C.
TÜRK PATENT ENSTİTÜSÜ

MARKA TESCİL BELGESİ

Marka No : 2015 55430 - Ticaret - Hizmet

HAVALAN

**Marka Sahibi : PROKTES PROJE KONSTRÜKSİYON TESİSAT
DOĞALGAZ İNŞAAT SANAYİ VE TİCARET
LİMİTED ŞİRKETİ
TÜRKİYE CUMHURİYETİ
Akhan Mahallesi Bahar Caddesi No:5 MERKEZ
DENİZLİ
Emtiası : 06 , 11 , 35 , 37
İlişiktir.**



Markaların Korunması Hakkında 556 Sayılı Kanun Hükmünde Kararnameye göre 26/06/2015 tarihinden itibaren ON YIL müddetle 03/02/2016 tarihinde tescil edilmiştir.

H. Asan

Prof. Dr. Habip ASAN
Enstitü Başkanı





PROKTES

**COMMERCIAL
& INDUSTRIAL FANS**

